

# DEEP DEVANSH 6

Redefining Harmonious Living  
in Navi Mumbai

**G+7, 1 RK, 1 BHK & SHOPS**

- CIDCO Allotted Plot
- Ground + 7
- Spacious 1 RK, 1 BHK & Shops
- Ample Car Parking

KARANJADE

Call - 022-40160709

PLOT NO-11, SEC - R1, PUSHPAK NODE, KARANJADE



# ABOUT US



We will Help You Find the Home of Your Dreams.


Sambhav Group is a company that specializes in affordable homes for you and your family. We offer comfortable and modern living spaces at an affordable price. Sambhav Group has been providing quality workmanship since 2011, so trust us to provide the best service!

## Our Mission

The mission of Sambhav Group builders is to provide comfortable and affordable homes to all segments of society. Everyone has the freedom of choice of having their own home. Irrespective of a financial hindrance, we strive to provide you with the best home

## Our Vision

Sambhav Group's vision is to upgrade the lifestyle of lower-budget income by delivering budgeted houses that are economical and well-planned. Our vision is to create a balance between high-income and low-income people.





# FLOOR PLAN

## Ground Floor





# FLOOR PLAN

## 1st Floor



20M WIDE ROAD

9M WIDE ROAD





# FLOOR PLAN



20M WIDE ROAD

9M WIDE ROAD



# FLOOR PLAN



20M WIDE ROAD

9M WIDE ROAD



# FLOOR PLAN



20M WIDE ROAD

9M WIDE ROAD

# AMENITIES



## Flooring

- 2' X 2' vitrified tiles flooring in entire Flat

## Door

- Designer Main Door with elegant fittings
- Laminate flush door for bedroom
- Bakelite doors for all bath & W.C.


## Kitchen

- Granite Platform with stainless steel sink and ceramic tiles dado above counter upto 7' height.

## Water

- Underground and overhead water tank with adequate storage capacity

## Walls/Paint

- Wall putty or gypsum finished walls with acrylic distemper paint
  - Acrylic paint on external walls
- 



# AMENITIES



## Windows

- Powder coated aluminum sliding window with marble sill


## Electrification

- Sufficient electric points with ISI marked switch in all rooms
- Provision for cable T.V/Telephone connection in living room & master bedroom
- ISI marked concealed copper wiring with MCB/ELCB

## Terrace

- Special water proofing treatment with china chips flooring

## Toilets

- Designer toilets with marble window sill and door frame
  - Tiles dado upto 7' height
  - Concealed plumbing
  - Quality CP & Sanitary fittings of reputed make
- 

# HIGHLIGHTS



## Features

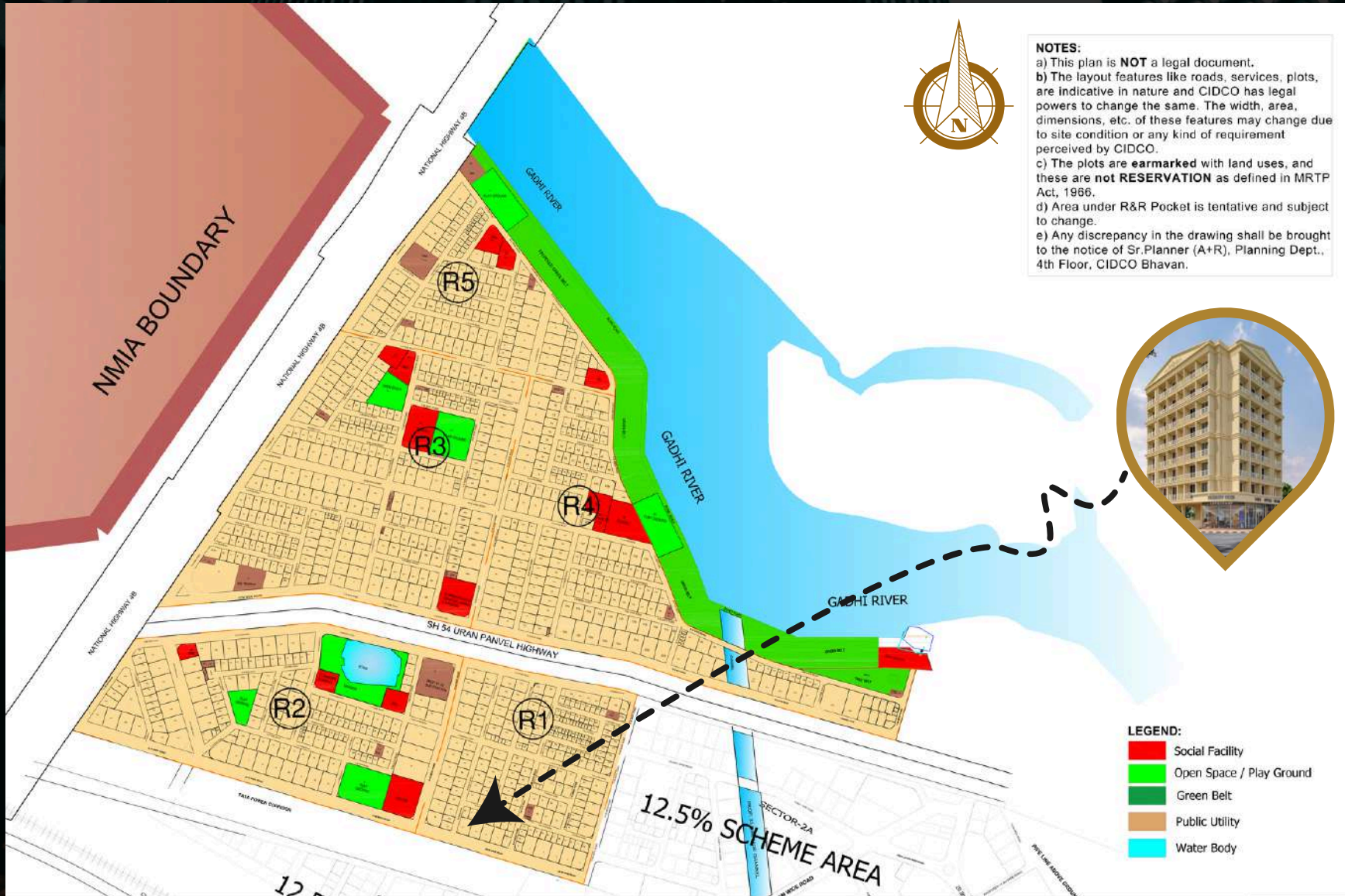
- CIDCO Allotted Plot
- Ground + 7 Storied Building
- Spacious 1 RK, 1 BHK & Shops
- Ample Car Parking Space

## Close Proximity

- Khandeshwar & Panvel Railway Station.
- ST Depot
- Sewri Nhava Sheva Sea Link
- JNPT Port
- Education Institute
- International Airport
- Temple, Market
- Hospitals, Malls etc...



# MAP LOCATION



# DEEP DEVANSH 6



The Next Evolution of  
Peaceful Residences

---

Site Address:

**Plot No - 11, Sec - R1, Pushpak Node, Karanjade**

Corporate Office:

Shop No 15/16/17/18 Pushpa Ganga CHS Plot  
No 4 Sector 9 Kamothe Navi Mumbai,  
Maharashtra 410209

[office@sambhavgroup.net](mailto:office@sambhavgroup.net)  
[www.SambhavGroup.net](http://www.SambhavGroup.net)  
**022-40160709**

**Disclaimer:** All Plans, Drawings, Amenities, Facilities Etc. Are Subject to The Approval of The Representative Authorities & Would be Changed, if Necessary. Discretion Remains with The Developers. All Rendering and Maps are Artists Conception & not Actual Depictions. This is not an Offer Document.



# Deep DIVINE 6

## Interior Design Companies

Created  
by Team



# *Deep* DIVINE 6

## Interior Design Companies



*Created  
by Team*

🏠 Salford & co.



# KEYS TO YOUR FUTURE

*Elevating Lifestyles with Innovative Real Estate*

**MORE INFO**

+123 456 7890  
[www.reallygreatsite.com](http://www.reallygreatsite.com)



**REAL  
ESTATE**

# HOME FOR SALE

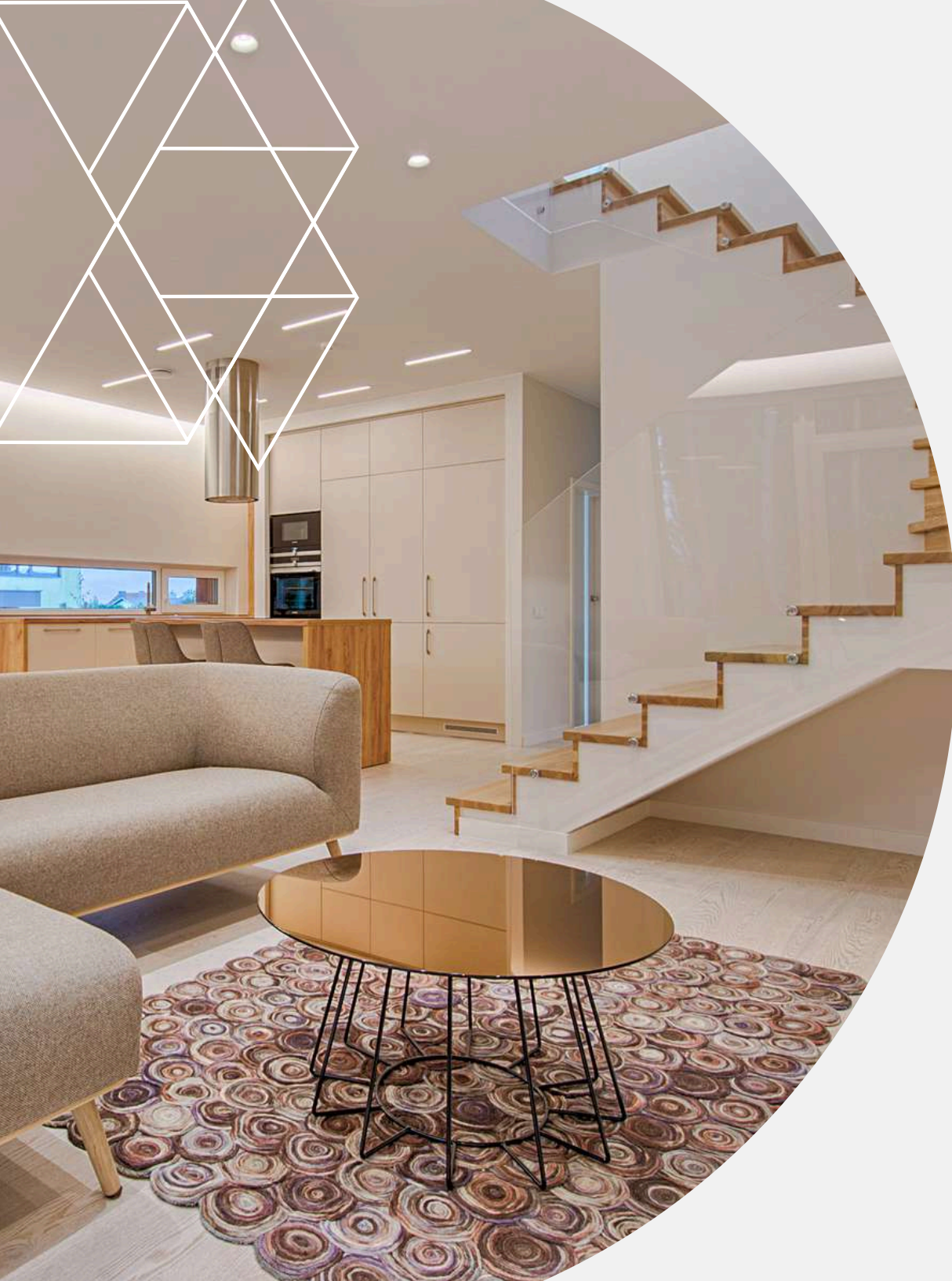
Lorem Ipsum is simply dummy text of the printing and typesetting industry. Lorem Ipsum has been the industry's standard dummy text ever since the 1500s, when an unknown printer took a galley of type and scrambled it to make a type specimen book. It has survived not only five centuries



## FEATURE

- lorem ipsum
- lorem ipsum
- lorem ipsum
- lorem ipsum





# Interior Design Companies



*Created  
by Team*



# Table of Content

---

- About Us
- Our Team
- Experience
- Services
- Infographic
- Our Advance
- Contact Us
- Ending

[www.reallygreatsite.com](http://www.reallygreatsite.com)



# About Us

Presentations are communication tools that can be used as demonstrations, lectures, speeches, reports, and more.



# Our Team

---

Presentations are communication tools that can be used as demonstrations, lectures, speeches, reports, and more.

[www.reallygreatsite.com](http://www.reallygreatsite.com)



**Aaron Loeb**

Presentations are communication.



**Dani Martinez**

Presentations are communication.



# Experiences

Presentations are communication tools that can be used as demonstrations, lectures, speeches, reports, and more.



## Project Design, 2021

Presentations are communication tools.

## Project Design, 2022

Presentations are communication tools.



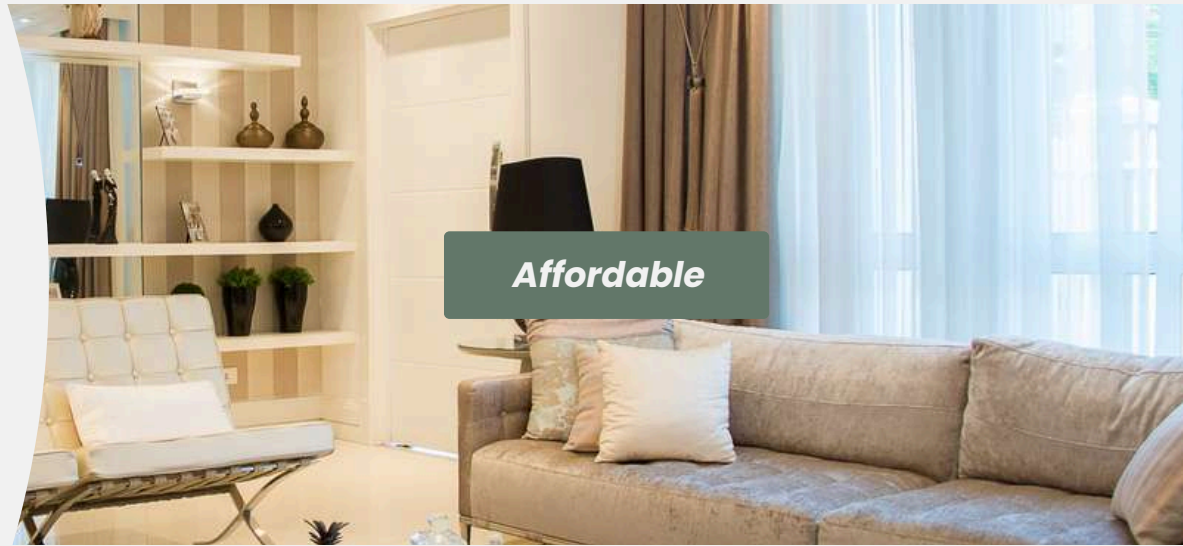


# Services

Presentations are communication tools that can be used as demonstrations, lectures, speeches, reports, and more.



**Great Service**



**Affordable**



**Satisfaction**

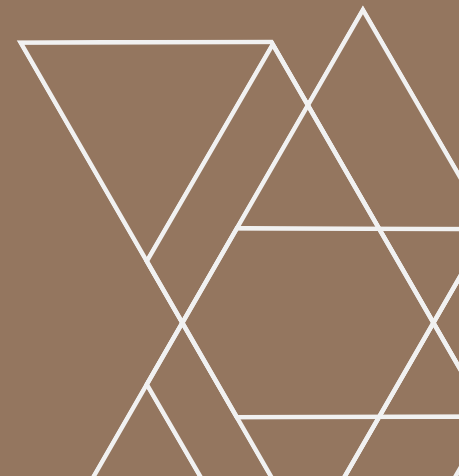
Our Data



# Infographics

Presentations are communication tools that can be used as demonstrations, lectures, speeches, reports, and more.

Presentations are communication tools that can be used as demonstrations, lectures, speeches, reports, and more.





# Our Advance

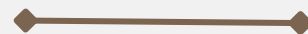
Presentations are communication tools that can be used as demonstrations, lectures, speeches, reports, and more.







# Contact Us



Presentations are communication tools that can be used as demonstrations, lectures, speeches, reports, and more.



[www.reallygreatsite.com](http://www.reallygreatsite.com)



+123-456-7890



123 Anywhere St., Any City,  
ST 12345



# Thank You



Presentations are communication tools that can be used as demonstrations, lectures, speeches, reports, and more.

[www.reallygreatsite.com](http://www.reallygreatsite.com)



**MODERN  
HOME  
FOR SALE**

**DISCOUNT  
50%  
OFF  
START PRICE**

**\$1.000.000**



**BOOK NOW**



Live your  
dream home  
with us.

Inquire Now

RENT TO  
OWN

For more information, visit place website here



# ABOUT US

*We will Help You Find the Home of Your Dreams.*

Sambhav Group is a company that specializes in affordable homes for you and your family. We offer comfortable and modern living spaces at an affordable price. Sambhav Group has been providing quality workmanship since 2011, so trust us to provide the best service!

## *Our Mission*

The mission of Sambhav Group builders is to provide comfortable and affordable homes to all segments of society.

Everyone has the freedom of choice of having their own home. Irrespective of a financial hindrance, we strive to provide you with the best home

## *Our Vision*

Sambhav Group's vision is to upgrade the lifestyle of lower-budget income by delivering budgeted houses that are economical and well-planned. Our vision is to create a balance between high-income and low-income people.



# AMENITIES

## Flooring

- 2' X 2' vitrified tiles flooring in entire Flat

## Door

- Designer Main Door with elegant fittings
- Laminate flush door for bedroom
- Bakelite doors for all bath & W.C.

## Kitchen

- Granite Platform with stainless steel sink and ceramic tiles dado above counter upto 7' height.

## Walls/Paint

- Wall putty or gypsum finished walls with acrylic distemper paint
- Acrylic paint on external walls

## Water

- Underground and overhead water tank with adequate storage capacity

## Windows

- Powder coated aluminum sliding window with marble sill

## Electrification

- Sufficient electric points with ISI marked switch in all rooms
- Provision for cable T.V/Telephone connection in living room & master bedroom
- ISI marked concealed copper wiring with MCB/ELCB

## Terrace

- Special water proofing treatment with china chips flooring

## Toilets

- Designer toilets with marble window sill and door frame
- Tiles dado upto 7' height
- Concealed plumbing
- Quality CP & Sanitary fittings of reputed make

# HIGHLIGHTS

## Where Serenity Meets Accessibility

### Features

- CIDCO Allotted Plot
- Ground + 7 Storied Building
- Spacious 1 BHK & Shop
- Ample Car Parking Space

### Close Proximity

- Bamandongri & Kharkopar Railway Station.
- ST Depot
- Sewri Nhava Sheva Sea Link
- JNPT Port
- Education Institute
- International Airport
- Market
- Hospitals
- Malls



# MAP LOCATION

**NOTES:**

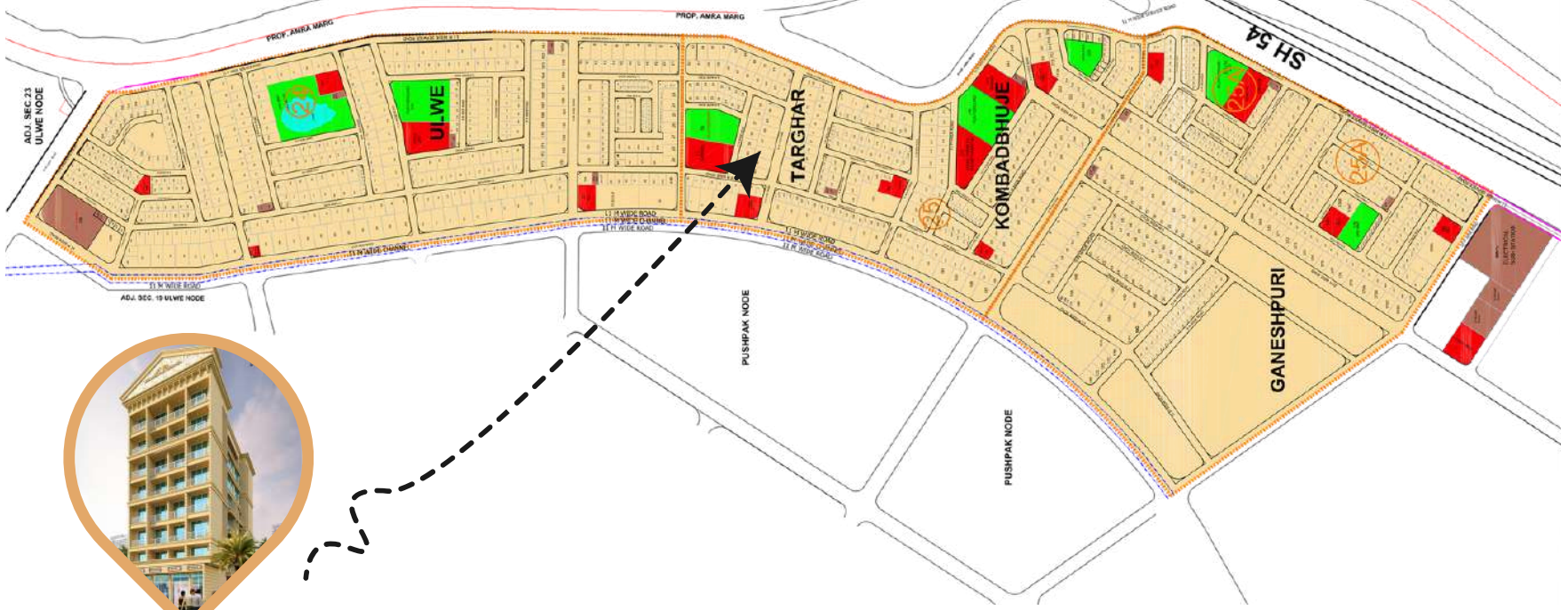
- This plan is NOT a legal document.
- The layout of roads, services, plots, are indicative in this plan. The final layout shall be as per the approved layout plan of CIDCO. The final layout, dimensions, etc. of these features may change due to site condition or any kind of requirement perceived by CIDCO.
- The plots are earmarked with land uses, and these are not RESERVATION as defined in MRTP Act, 1966.
- Area under R&R Pocket is tentative and subject to change.
- Any discrepancy in the drawing shall be brought to the notice of Sr. Planner (A/R), Planning Dept., 4th Floor, CIDCO Bhawan.



**LEGEND:**

- Social Facility
- Open Space / Play Ground
- Public Utility

100 M WIDE SERVICE CORRIDOR



Plot No- 46, Sec- 25, Pushpak Vahal, Ulwe



# FLOOR PLAN

## Ground Floor



15M ROAD SIDE

# FLOOR PLAN

## 1st Floor



15M ROAD SIDE

# FLOOR PLAN

## 7th Floor Plan

15M ROAD SIDE



# Deep Dwarka



Your Peaceful Haven  
with City Perks

---

**Site Address:**

Plot No- 46, Sec- 25, Pushpak Vahal, Ulwe

**Corporate Office:**

Shop No 15/16/17/18 Pushpa Ganga CHS  
Plot No 4 Sector 9 Kamothe Navi Mumbai,  
Maharashtra 410209

[office@sambhavgroup.net](mailto:office@sambhavgroup.net)

[www.SambhavGroup.net](http://www.SambhavGroup.net)

+91 70395 56013

+91 99204 88323

**Disclaimer:** All Plans, Drawings, Amenities, Facilities Etc. Are Subject to The Approval of The Representative Authorities & Would be Changed, if Necessary. Discretion Remains with The Developers. All Rendering and Maps are Artists Conception & not Actual Depictions. This is not an Offer Document.