



SAMBHAV GROUP™

Welcome
to Tranquil
Living

DEEP RESIDENCY 2

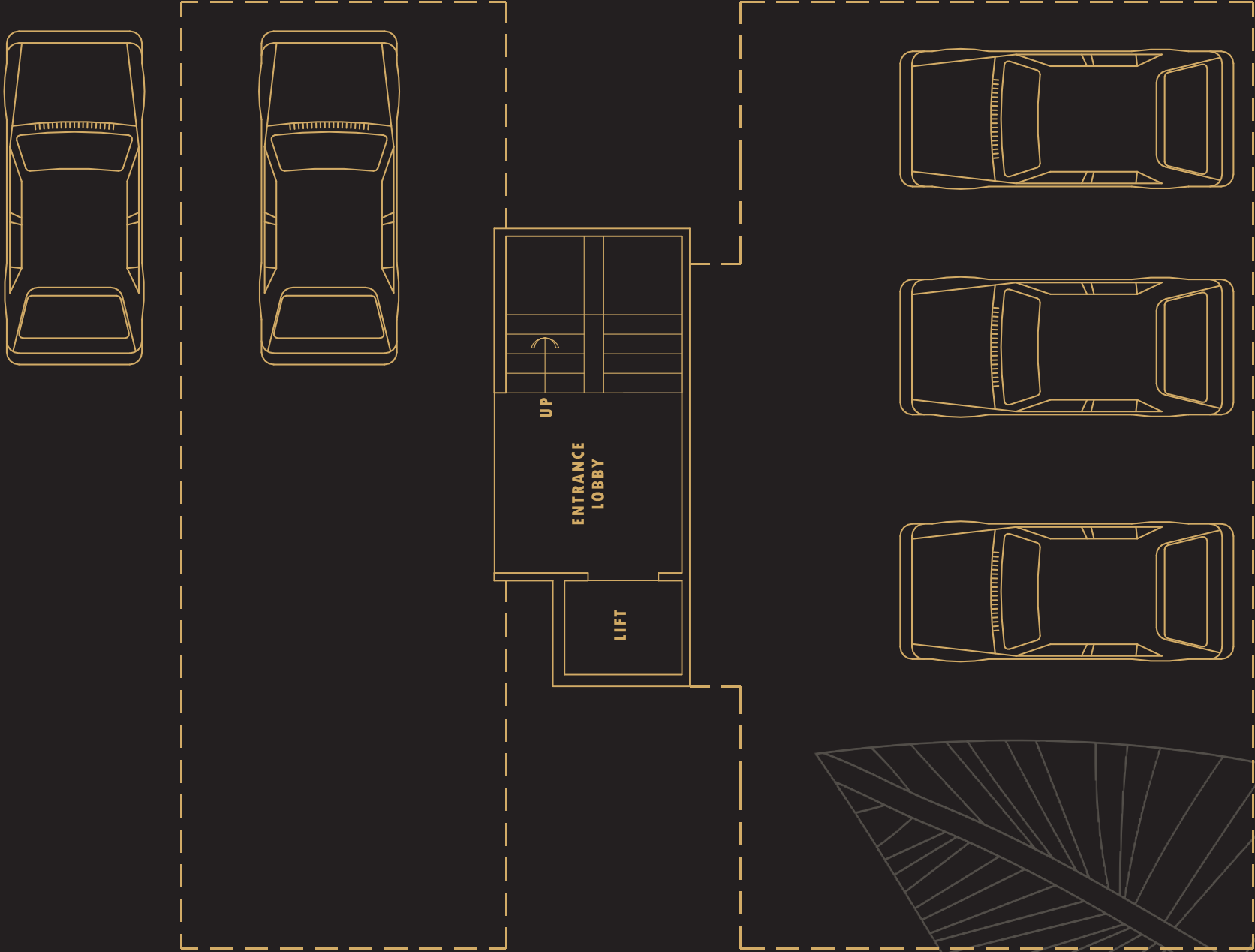
1RK, 1 RK + TERRACE, 1 BHK

KARANJADE, PANVEL.

RERA NO- P52000023668



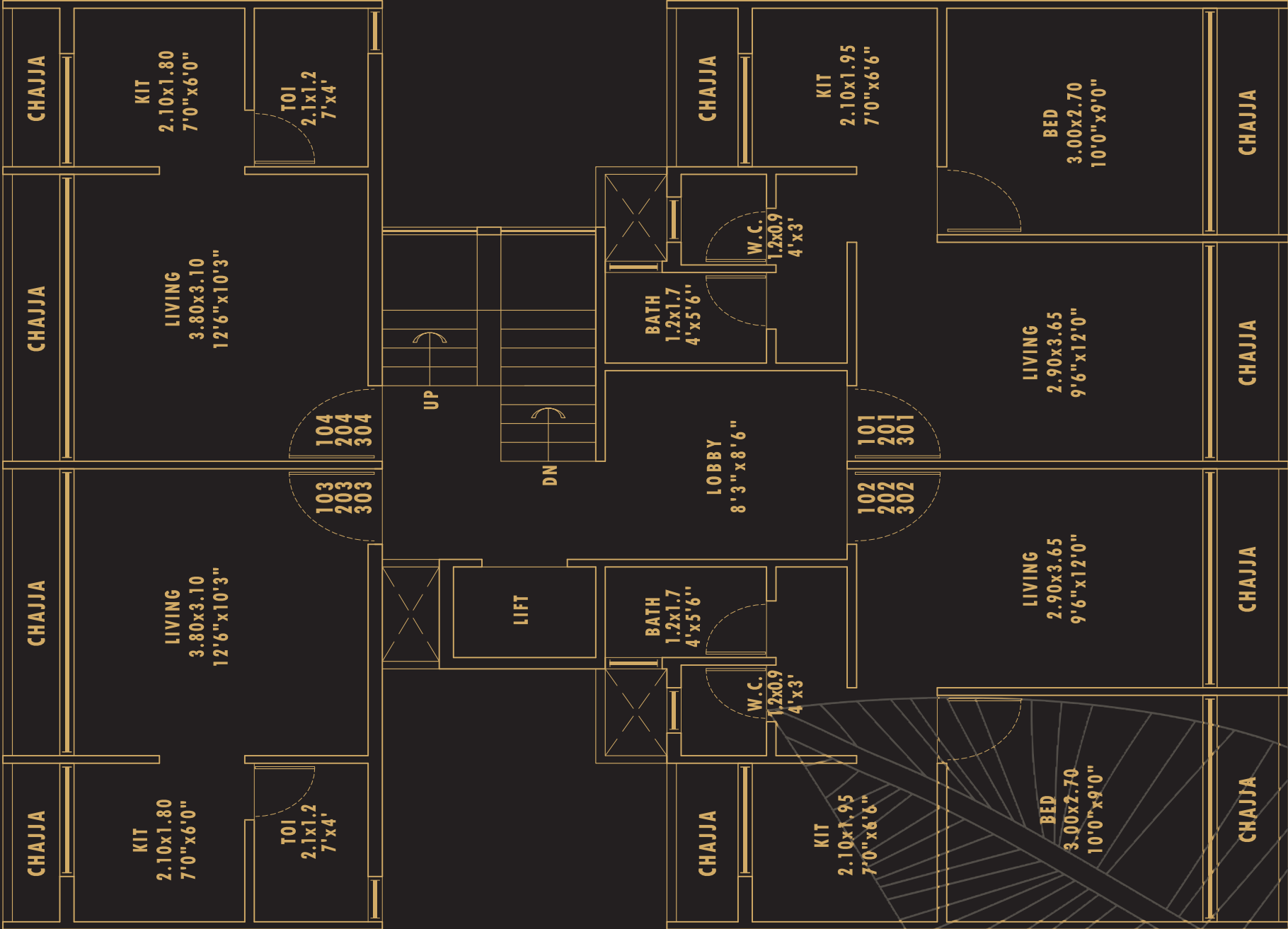
**GROUND
FLOOR PLAN**



ENTRANCE/EXIT SLIDING GATE

9M WIDE ROAD

1ST, 2ND, 3RD
FLOOR PLAN



9M WIDE ROAD

4TH
FLOOR PLAN



9M WIDE ROAD










DEEP RESIDENCY-2

FEATURES

- Cidco Allocated Plot
- G + 4 Storied Building
- Spacious 1 RK, 1 RK + Terrace, 1 BHK & Shops Available
- Terrace Flats Available
- Ample Car Parking Space On Ground Floor

THE PERFECT LOCATION FOR YOUR DREAM HOME”.

CLOSE PROXIMITY

-  Panvel Railway Station
-  ST Depot
-  Sewri – Nhava Sheva Sea Link
-  Jnpt Port
-  Education Institute
-  International Airport
-  Market
-  Hospitals
-  Malls

AMENITIES



Earthquake Resistant RCC design construction with attractive elevation.



2X2 Vitrified tiles flooring in entire flat.



Granite Platform With Stainless Steel Sinks And Ceramic Tiles Dado Above Counter Upto slab level.



All bathrooms beautifully designed with premium quality tiles.



Good Quality Toilets with Marble Window Sill And Door Frame. Tiles Dado Upto slab level.



Sufficient Electric Points with ISI Marked Switch in all Room.



Concealed plumbing and wiring.



Birla / JK based putty finished wall.



High speed elevators.



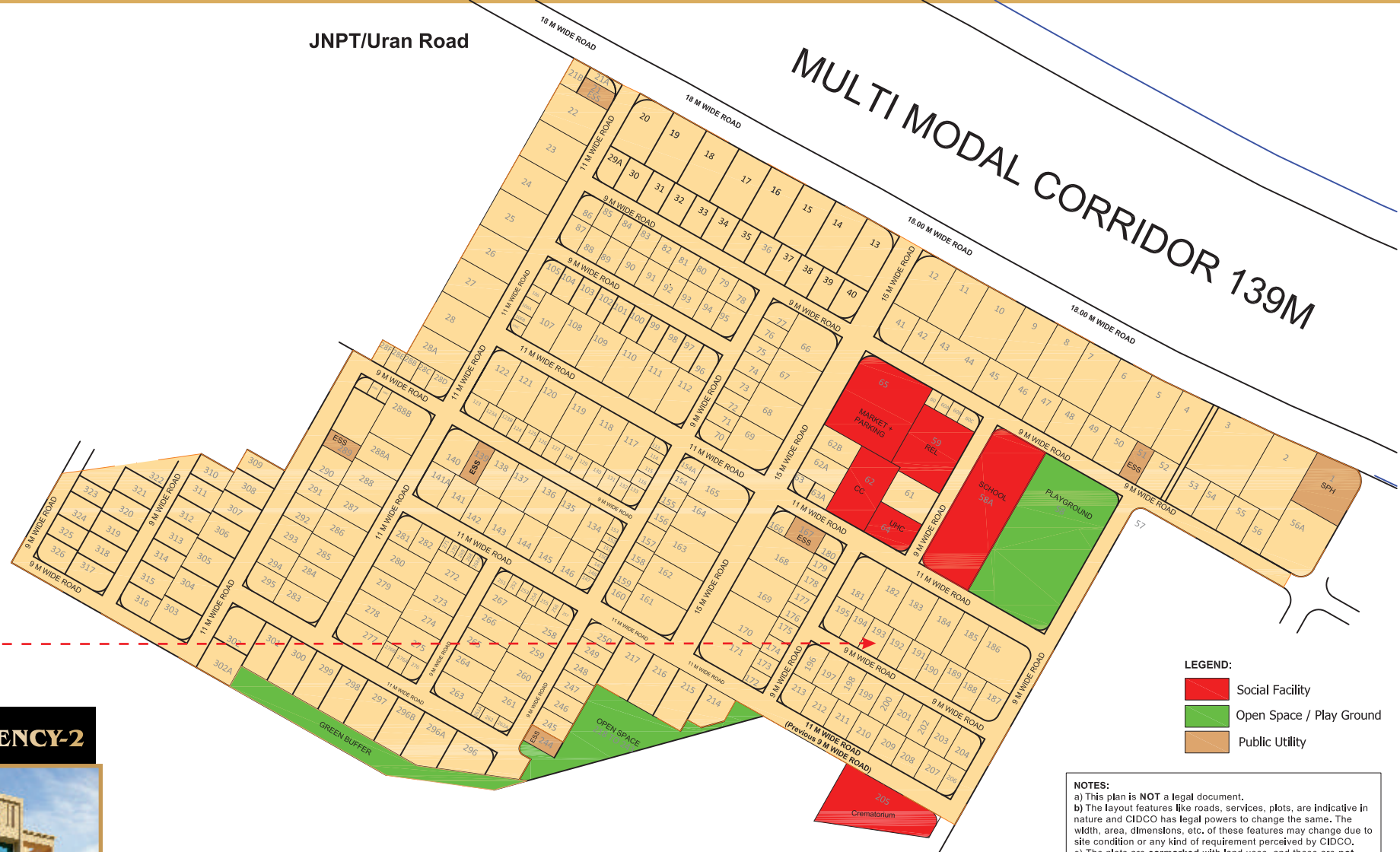
Heavy Section powder coated Aluminum windows with good quality glass-open able on 1 side.



Wiring of ISI quality & provisions for TV and A.C. points in entire flat.

JNPT/Uran Road

MULTI MODAL CORRIDOR 139M



LEGEND:

- Social Facility
- Open Space / Play Ground
- Public Utility

NOTES:

- a) This plan is NOT a legal document.
- b) The layout features like roads, services, plots, are indicative in nature and CIDCO has legal powers to change the same. The width, area, dimensions, etc. of these features may change due to site condition or any kind of requirement perceived by CIDCO.
- c) The plots are earmarked with land uses, and these are not RESERVATION as defined in MRTP Act, 1966.
- d) Area under R&R Pocket is tentative and subject to change.
- e) Any discrepancy in the drawing shall be brought to the notice of Sr.Planner (A+R), Planning Dept., 4th Floor, CIDCO Bhavan.

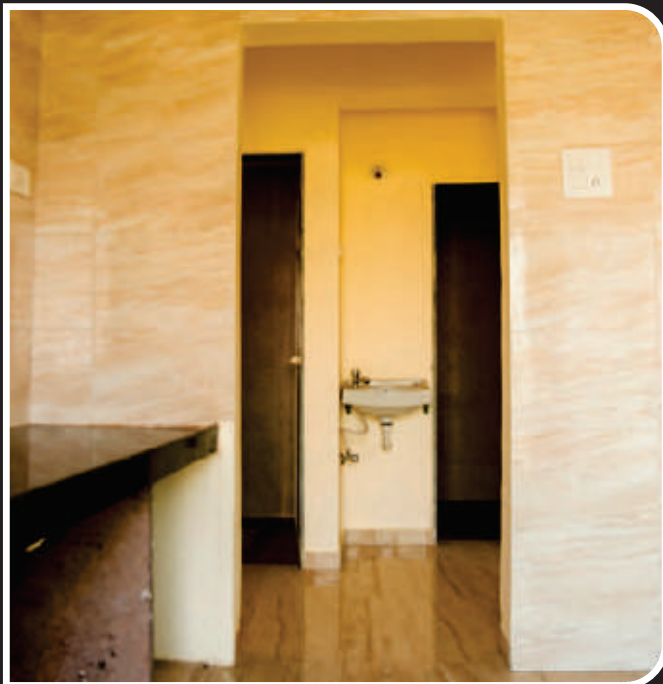
Mahatma Phule College



DEEP RESIDENCY-2



Plot No. 193, Sector - 1, Vadghar, Pushpak Node, Karanjade, Panvel.



Images are for representational purposes only.



*Live in
Peace and Harmony...*

DEEP RESIDENCY-2

Site Add.: Plot No. 193, Sector - 1, Vadghar, Pushpak Node, Karanjade, Panvel.

Corporate Office : Shop No. 15/16/17/18, Pushpa Ganga CHS.,
Plot No. 04, Sec. 09, Kamothe, Navi Mumbai - 410 209.

✉ office@sambhavgroup.net ☎ 022 27430 709 🌐 www.sambhavgroup.net