

प्रत्येकाचे स्वप्न
“संभव” करेल साकार



SAMBHAV GROUP™

DEEP ELANZA

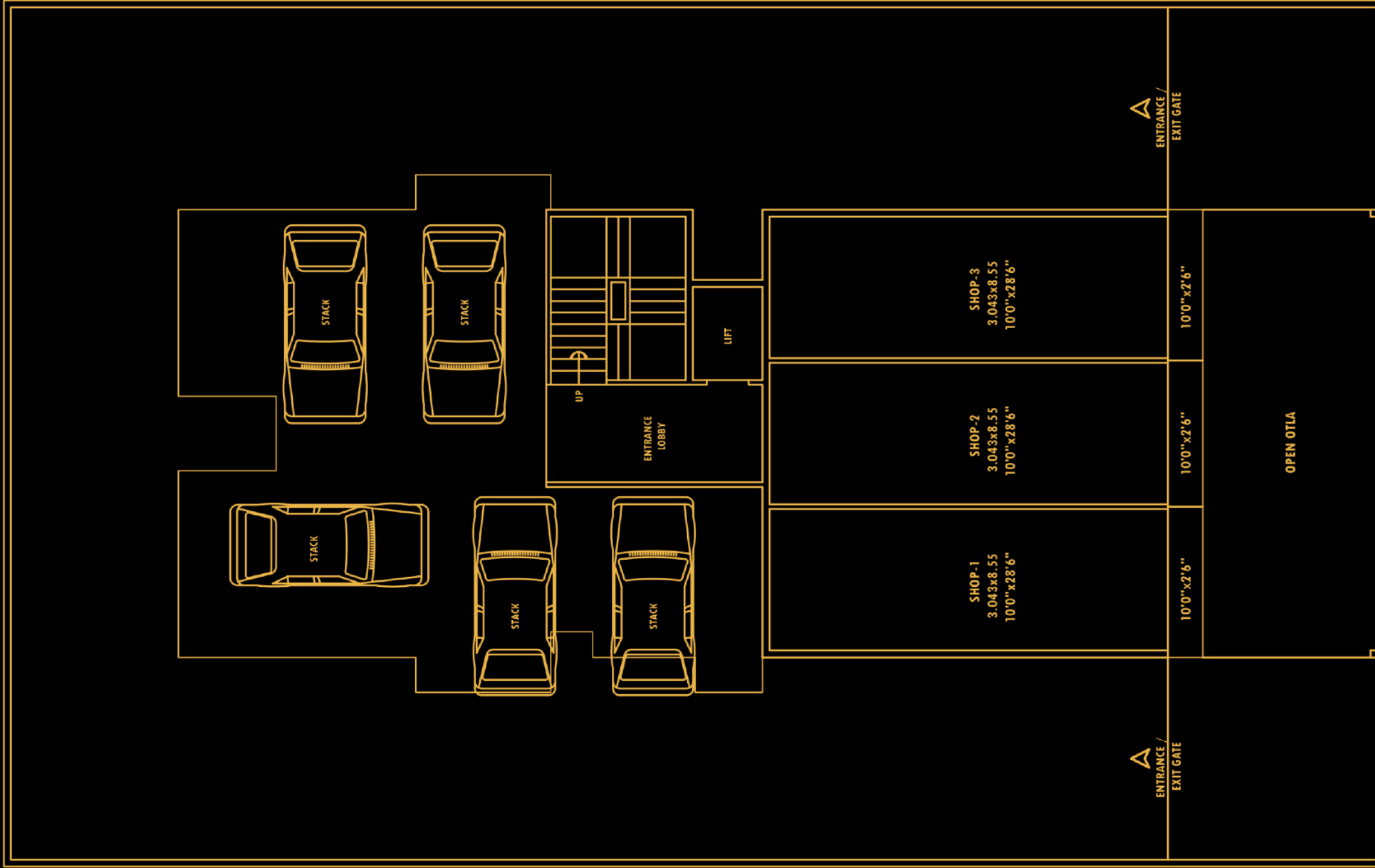
Plot No. 05, Sector -04, Karanjade, Panvel - 410206

RERA No. - P52000018851
maharera.mahaonline.gov.in

Images are for representational purposes only.



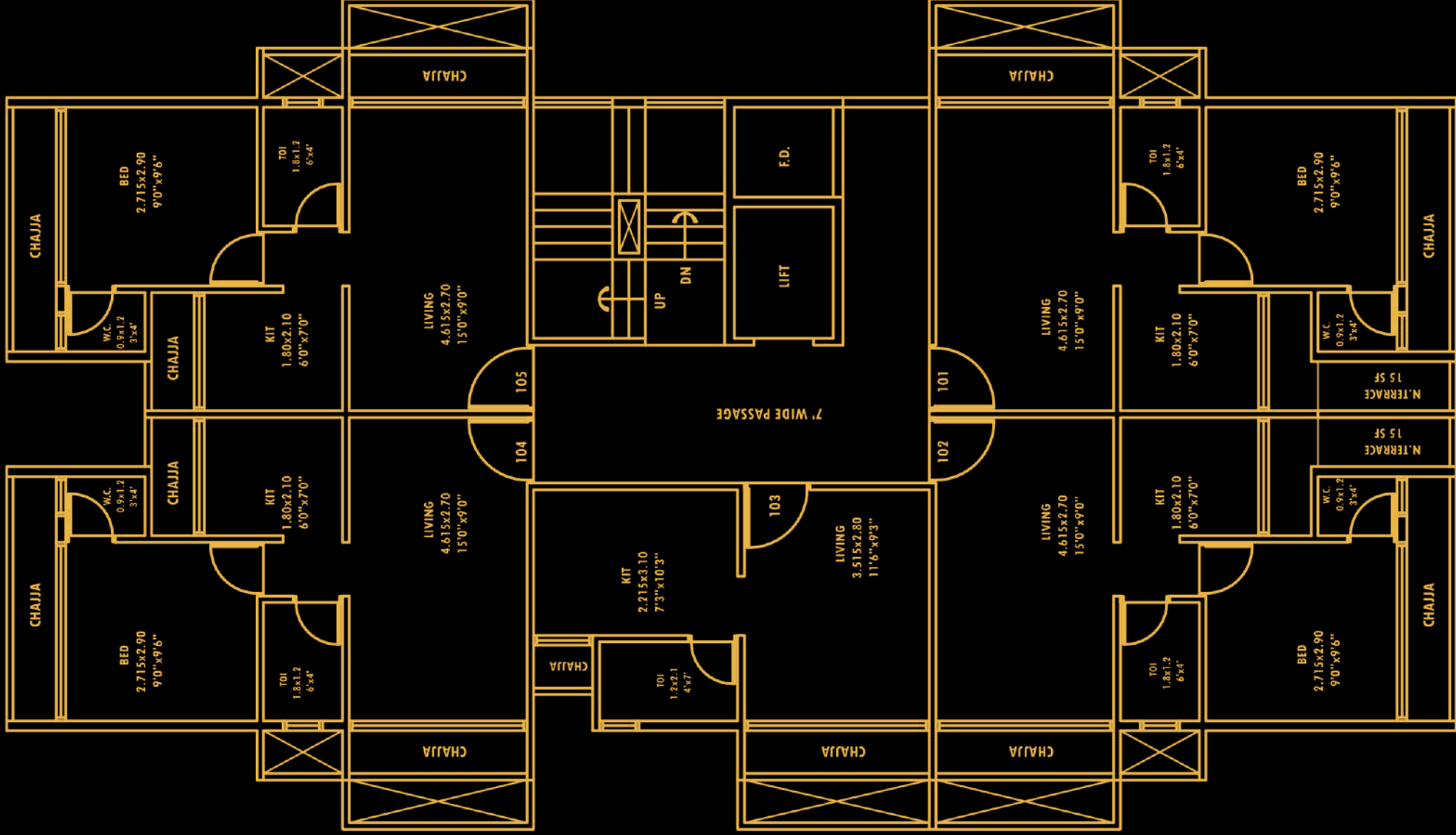
Images are for representational purposes only.



20M WIDE ROAD

GROUND FLOOR

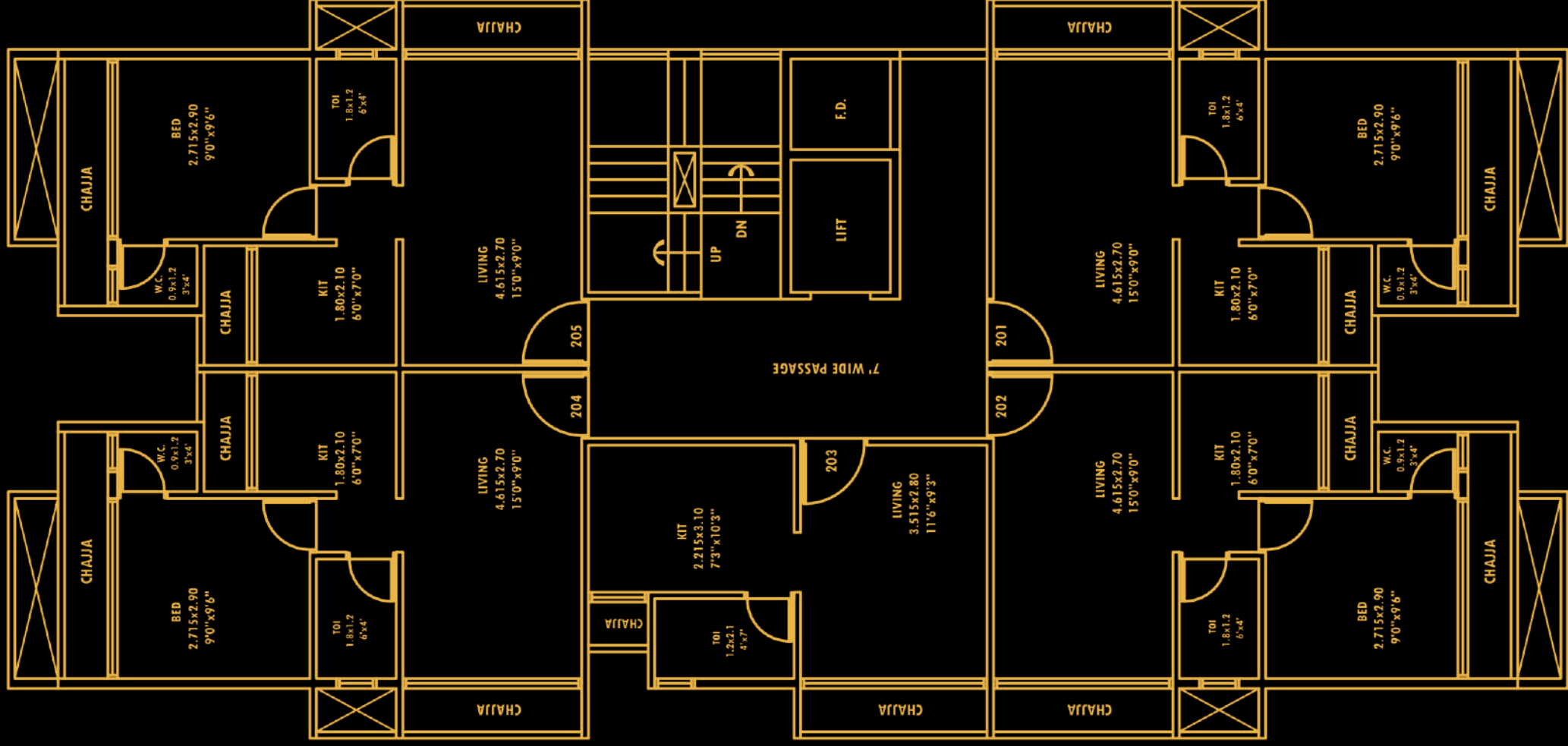
Images are for representational purposes only.



20M WIDE ROAD

1 ST FLOOR PLAN

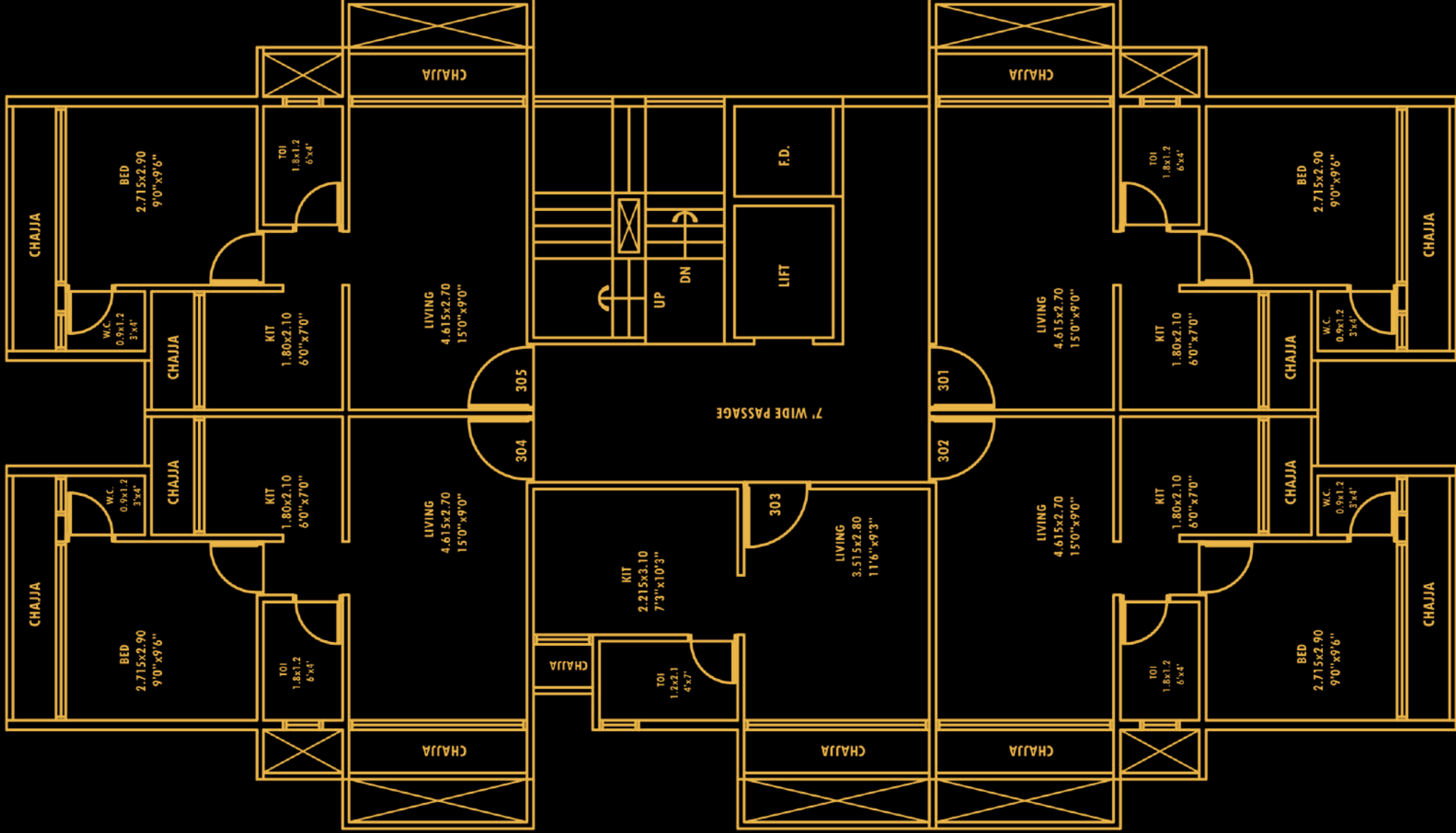
Images are for representational purposes only.



20M WIDE ROAD

2ND FLOOR PLAN

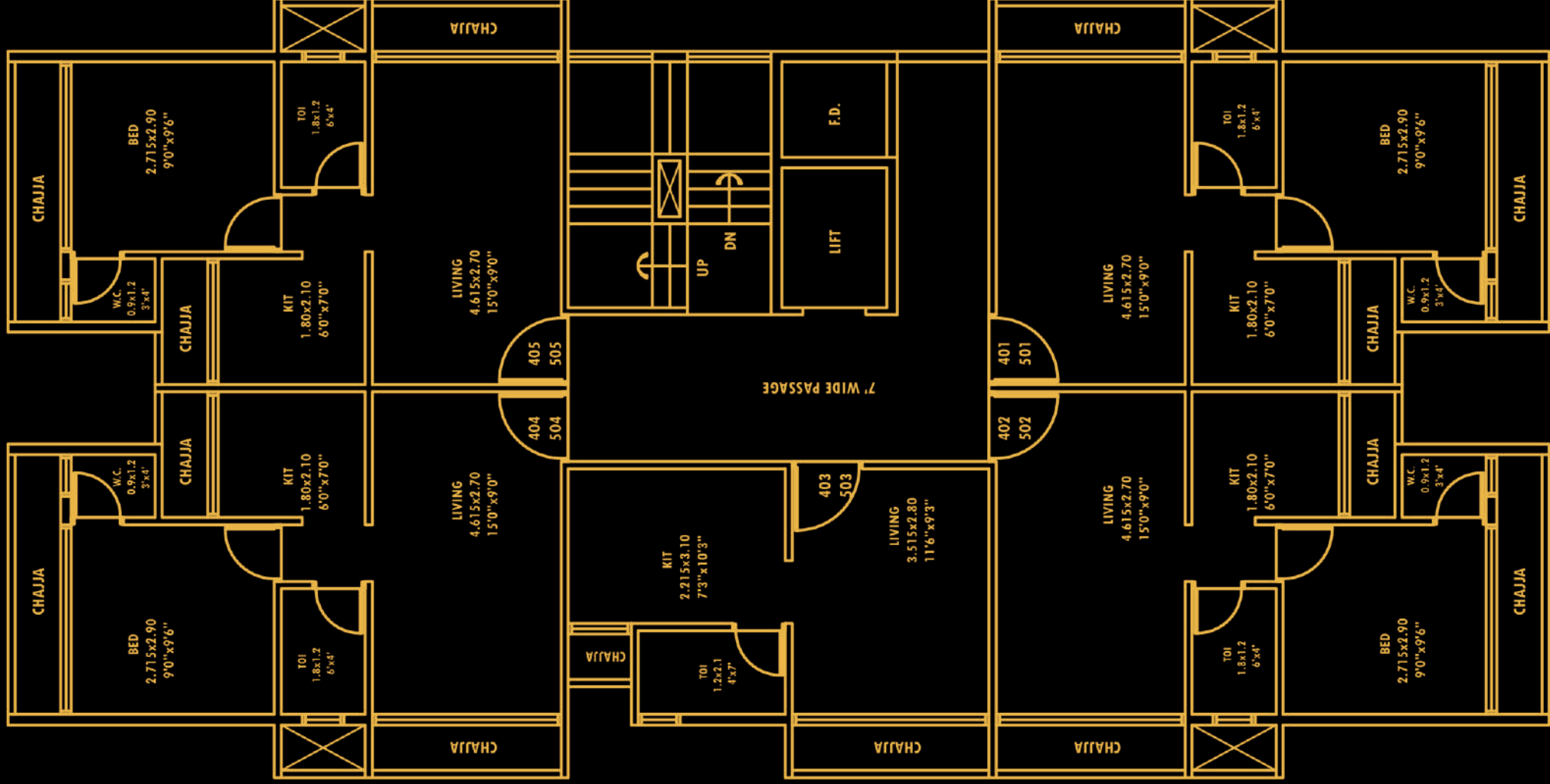
Images are for representational purposes only.



20M WIDE ROAD

3RD FLOOR PLAN

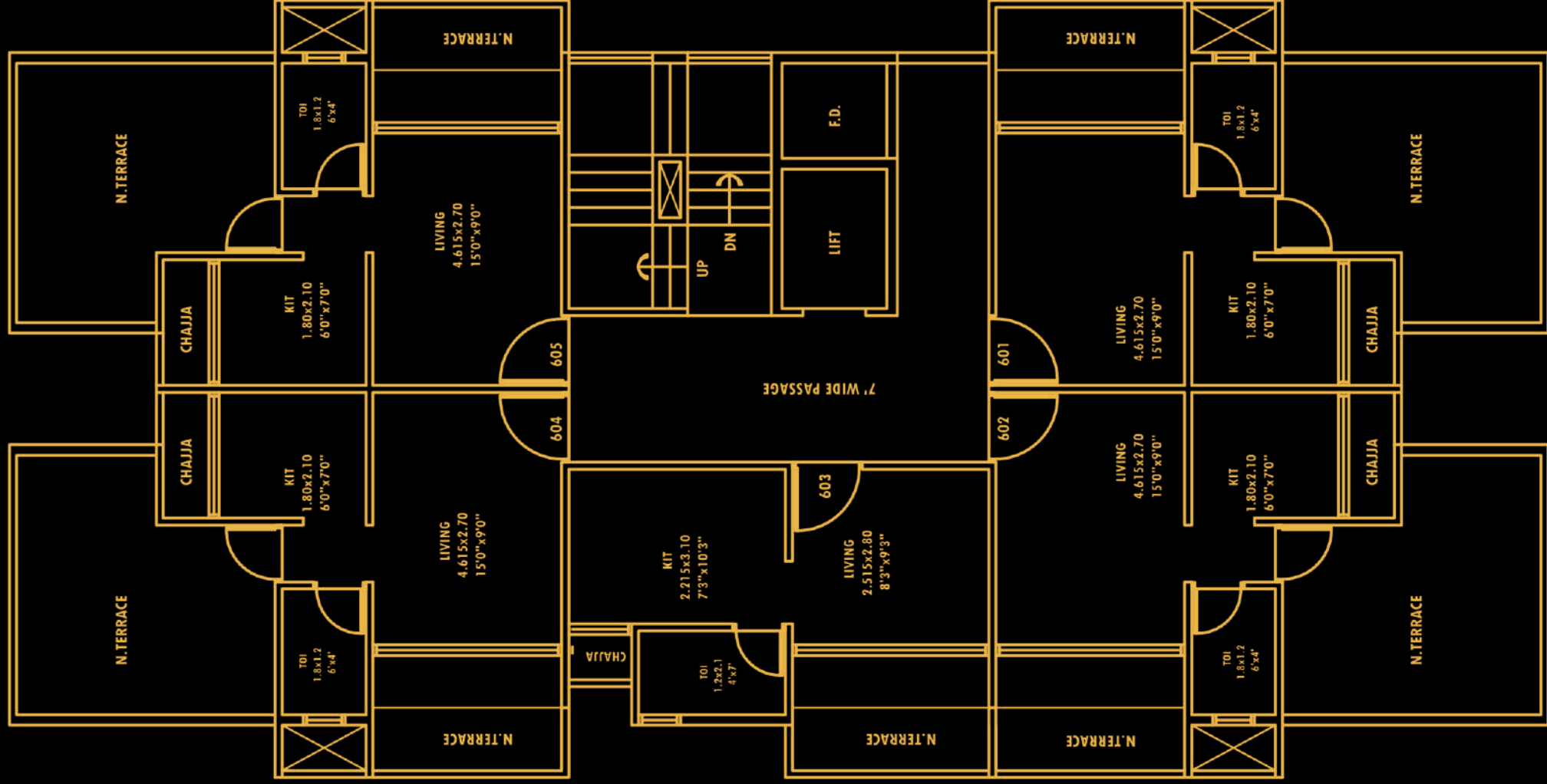
Images are for representational purposes only.



20M WIDE ROAD

4TH & 5TH FLOOR

Images are for representational purposes only.



20M WIDE ROAD

6TH FLOOR

Project Features:

- CIDCO Allotted plot
- Ground +6
- Residential building
- 1BHK, 1RK, 1RK+Terrace, Shops
- Terrace Flat available
- Lifts of reputed make
- Car Parking space on Ground floor

Location Features:

- Pollution free environment
- Near proposed international Airport
- 10 minutes drive from Panvel Railway Station
- 5 minutes drive from S. T. Depot
- Walking distance from Karnala Sports Academy and surrounded by schools, colleges, hospitals, restaurants etc.
- Karanjade is well connected by Roads and Railways
- ICAO (The International Civil Aviation Organization) Given Techno-feasibility clearance for The International Airport
- The Sewri-Nhava sheva sea link will connect Panvel to Mumbai city in 30 minutes
- Project behind Kalpataru Riverside and opp. to Panchmukhi Hanuman Mandir
- J.N.P.T. Port near by

Amenities:

Flooring

- 2' X 2' vitrified tiles flooring in entire Flat.

Door

- Designer Main Door with elegant fittings.
- Laminate flush door for bedroom.
- Bakelite doors for all bath & W.C.

Kitchen

- Granite Platform with stainless steel sink and ceramic tiles dado above counter upto 7' height.

Walls/Paint

- Wall putty finished walls with acrylic distemper paint in entire flat.
- Acrylic paint on external walls.

Windows

- Powder coated aluminum sliding window with marble sill.

Electrification

- Sufficient electric points with ISI marked switch in all rooms.
- Provision for cable T.V/Telephone connection in living room & master bedroom.
- ISI marked concealed copper wiring with MCB/ELCB.

Toilets

- Good Quality toilets with marble window sill and door frame.
- Tiles dado upto 7' height.
- Concealed plumbing.
- Quality CP & Sanitary fittings of reputed make.

Water

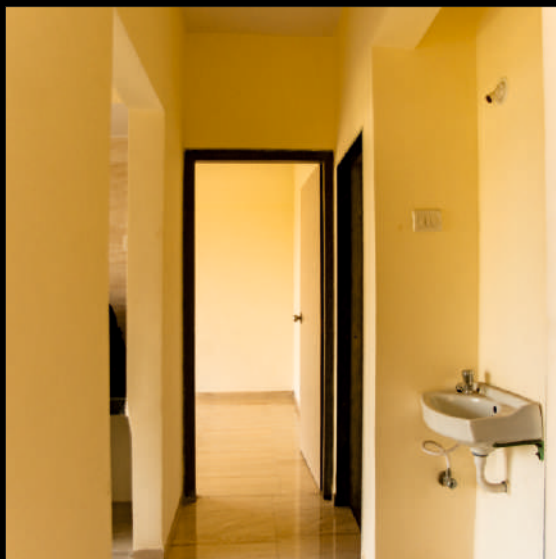
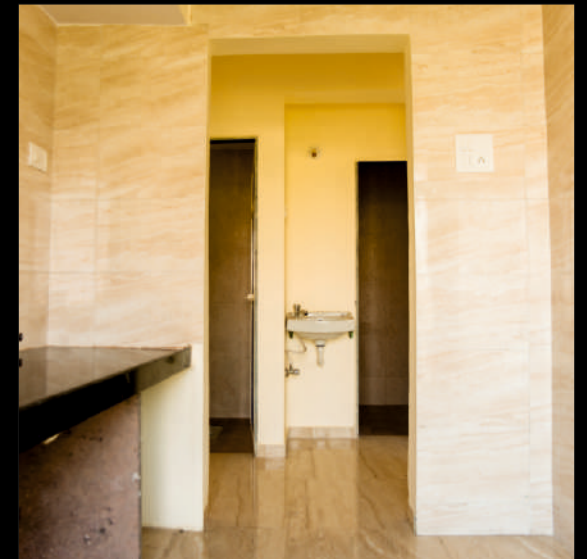
- Underground and overhead water tank with adequate storage capacity.

Terrace

- Special water proofing treatment with china chips flooring.

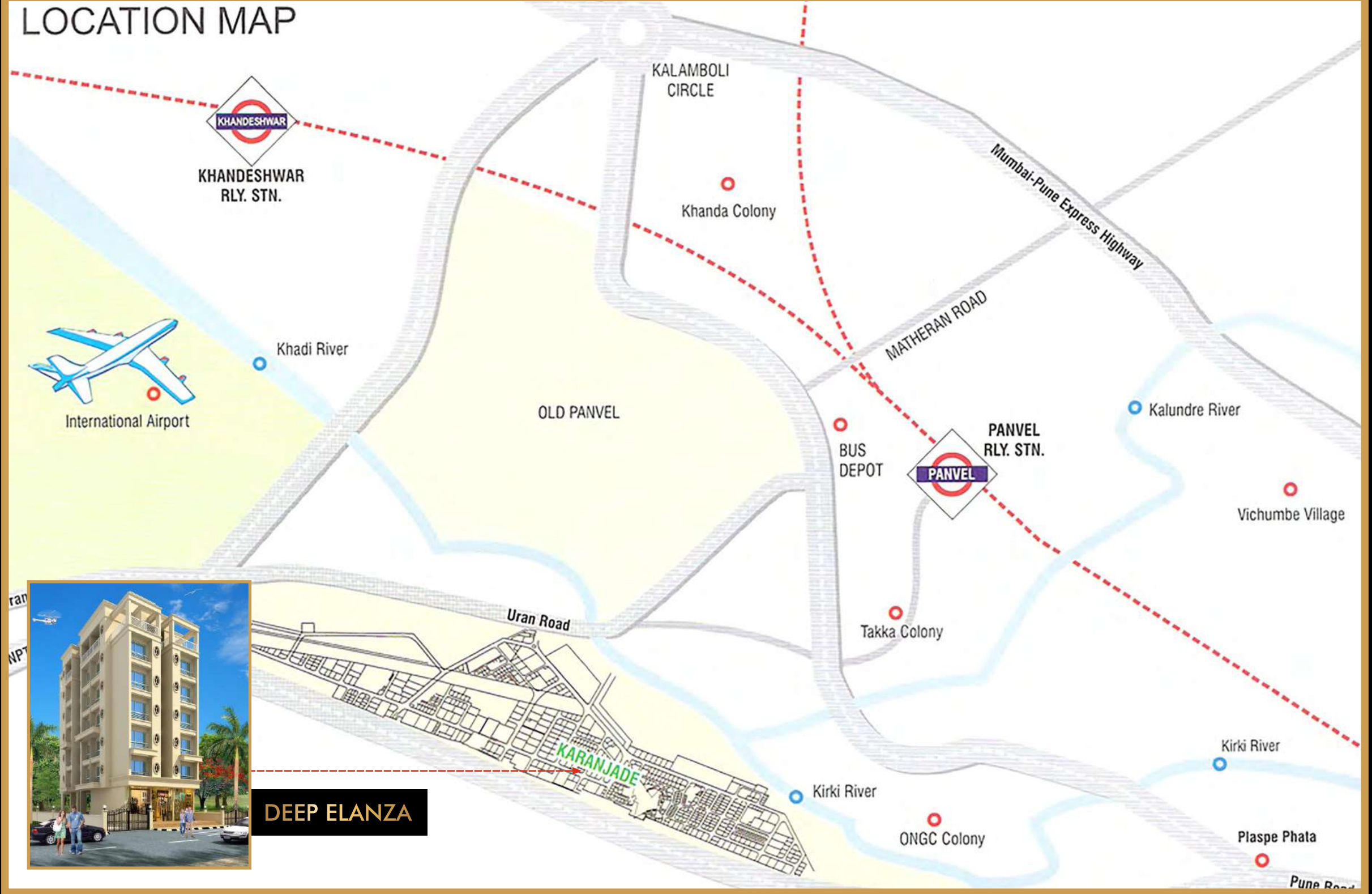
Lift

- Adimaya elevators made lift will be provided.



Images are for representational purposes only.

LOCATION MAP



DEEP ELANZA

Plot No. 05, Sector -04, Karanjade, Panvel - 410206

Disclaimer: Elevations and drawings are subject to approval of authority. The discretion remains with the developers.

नव्या जीवनशैलीसाठी नवी सुरवात

DEEP ELANZA

Plot No. 05, Sector -04, Karanjade, Panvel - 410206

Shop No. - 15/16, Pushpa Ganga CHS,
Plot No - 04, Sector - 09, Kamothe, Navi Mumbai - 410 209
022 27430709

office@sambhavgroup.net
www.sambhavgroup.net

RERA No. - P52000018851
maharera.mahaonline.gov.in