

प्रत्येकाचे स्वप्न  
“संभव” करेल साकार



**DEEP DIVYA**





SAMBHAV GROUP™

Plot No. 117, Sector - R3, PK1, Pushpak Node, Wadghar, Karanjade, Panvel - 410206

P52000020642

[maharera.mahaonline.gov.in](http://maharera.mahaonline.gov.in)



प्रत्येकाला रहायला घर हव, पण प्रत्येक कुटुंब हेच घर घडविते

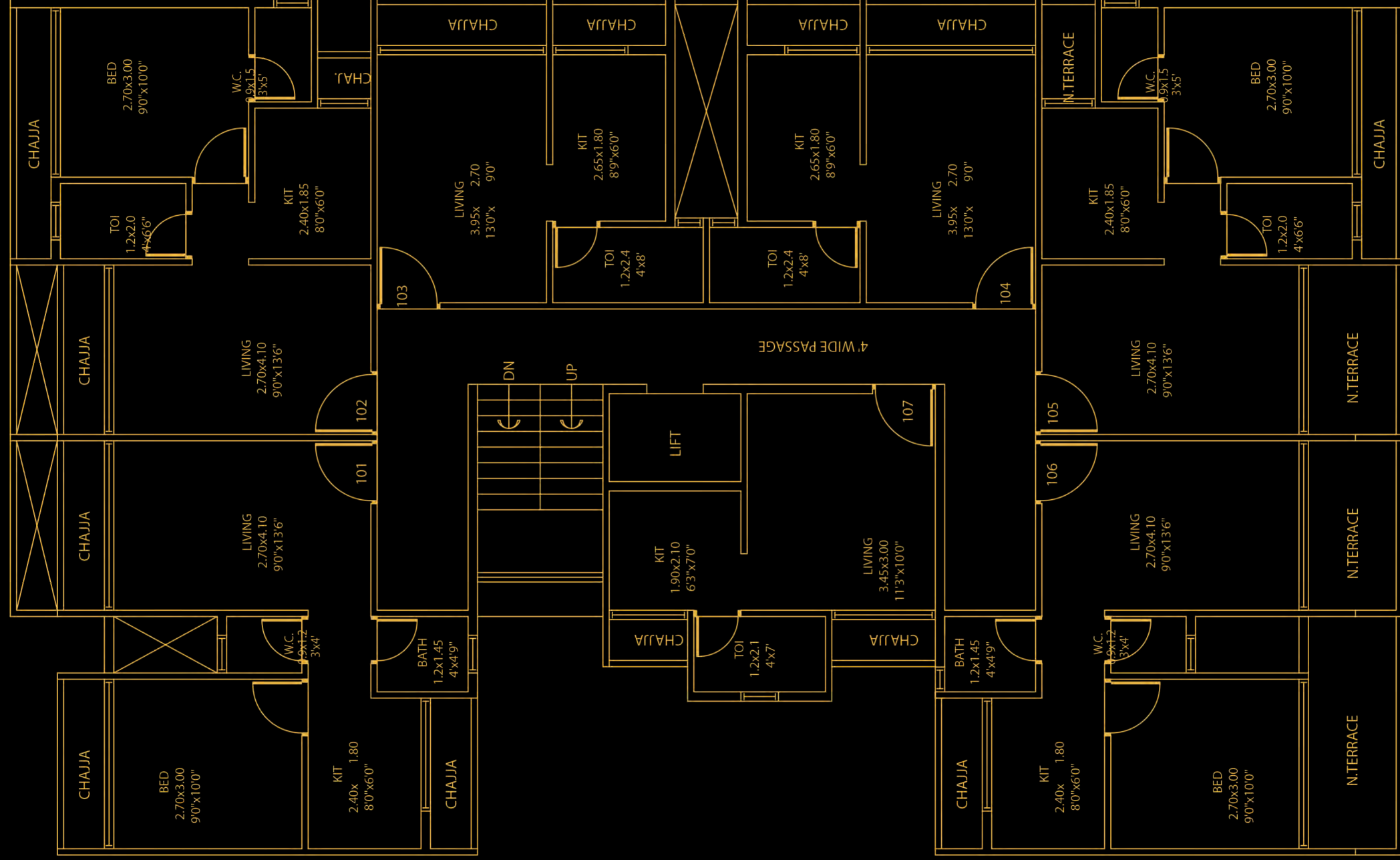
Images are for representational purposes only.



Images are for representational purposes only.

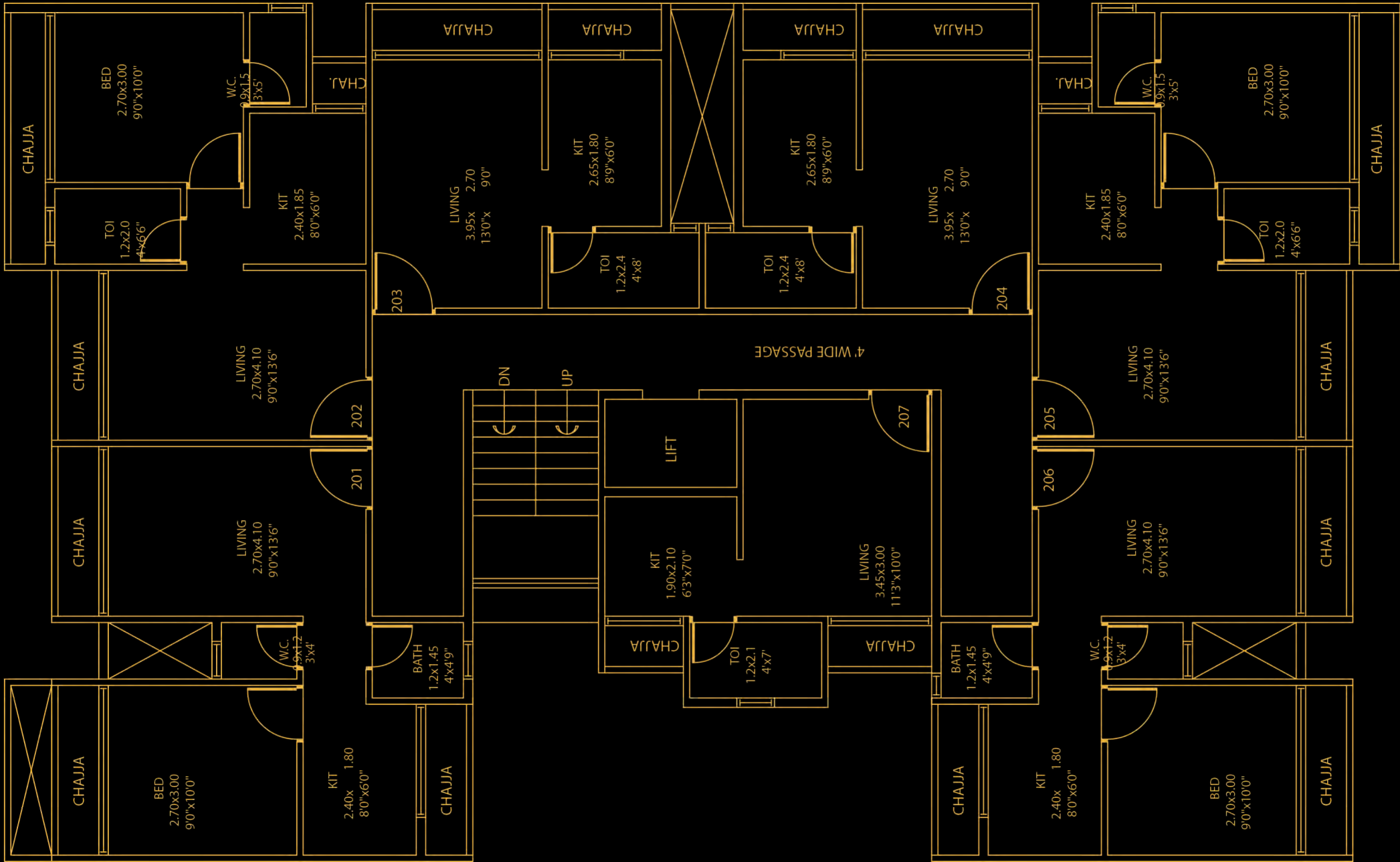


GROUND FLOOR



15M WIDE ROAD

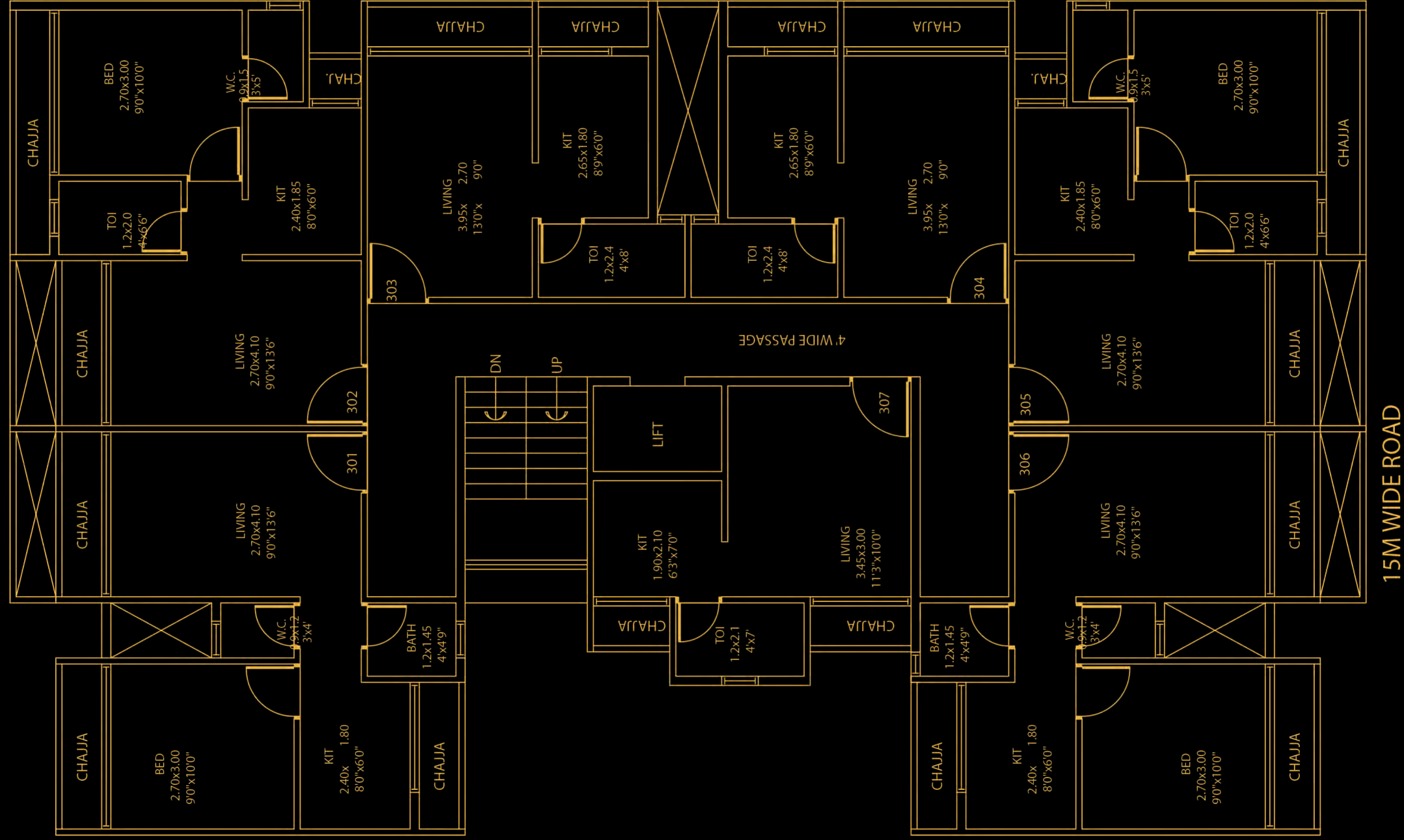
## 1ST FLOOR



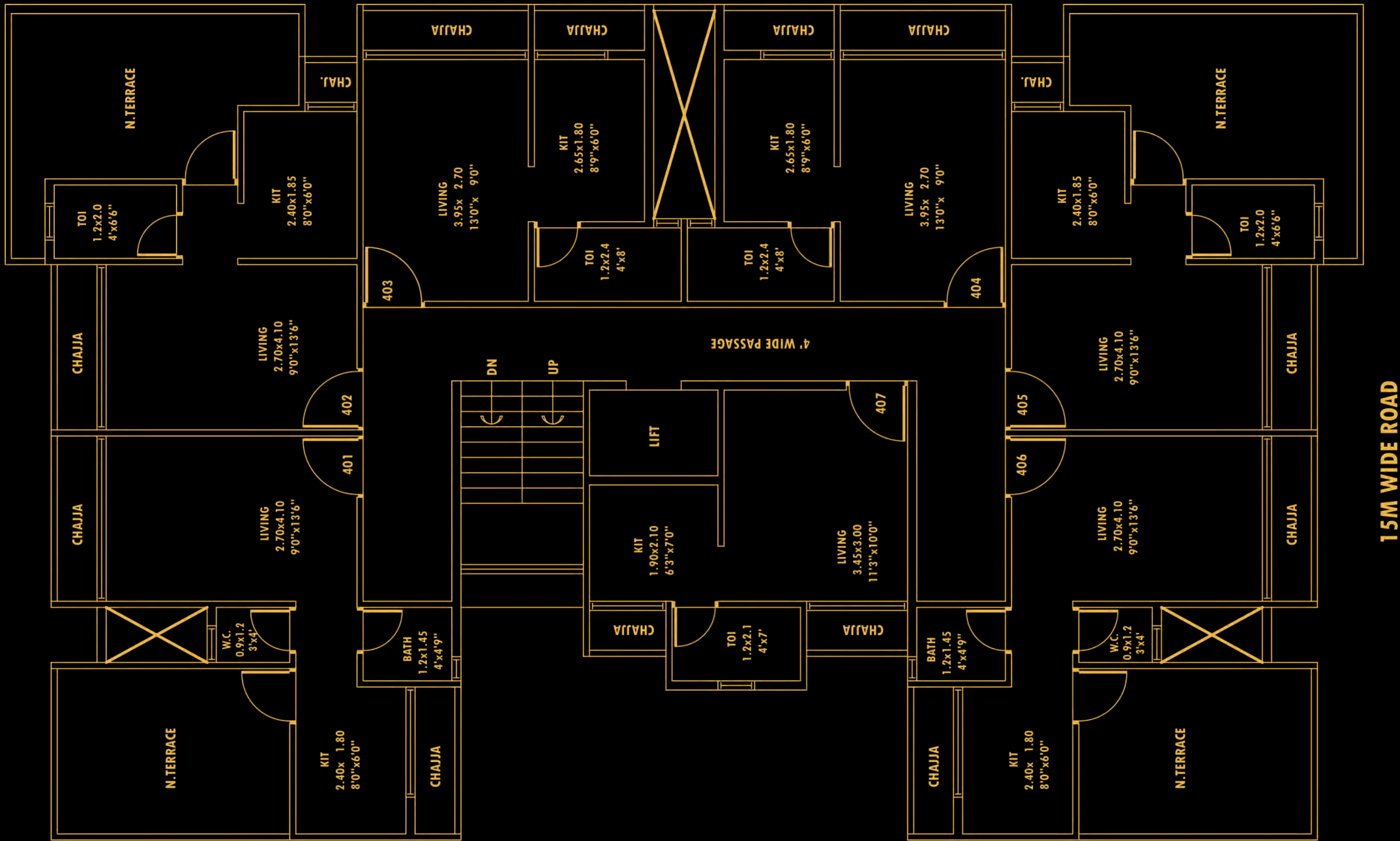
## 2ND FLOOR

15M WIDE ROAD

**Images are for representational purposes only.**



## 3RD FLOOR



4TH FLOOR

## Project Features:

- CIDCO Allotted plot
- Ground + 4
- Residential building
- 1BHK, 1RK, 1RK+Terrace, Shops
- Terrace Flat available
- Lifts of reputed make
- Car Parking space on Ground floor

## Location Features:

- Pollution free environment
- Near proposed international Airport
- 10 minutes drive from Panvel Railway Station
- 5 minutes drive from S. T. Depot
- Walking distance from Karnala Sports Academy and surrounded by schools, colleges, hospitals, restaurants etc.
- Karanjade is well connected by Roads and Railways
- ICAO (The International Civil Aviation Organization) Given Techno-feasibility clearance for The International Airport
- The Sewri-Nhava sheva sea link will connect Panvel to Mumbai city in 30 minutes
- Project behind Kalpataru Riverside and opp. to Panchmukhi Hanuman Mandir
- J.N.P.T. Port near by

## Amenities:

### Flooring

- 2' X 2' vitrified tiles flooring in entire Flat.

### Door

- Designer Main Door with elegant fittings.
- Laminate flush door for bedroom.
- Bakelite doors for all bath & W.C.

### Kitchen

- Granite Platform with stainless steel sink and ceramic tiles dado above counter upto 7' height.

### Walls/Paint

- Wall putty finished walls with acrylic distemper paint in entire flat.
- Acrylic paint on external walls.

### Windows

- Powder coated aluminum sliding window with marble sill.

### Electrification

- Sufficient electric points with ISI marked switch in all rooms.
- Provision for cable T.V/Telephone connection in living room & master bedroom.
- ISI marked concealed copper wiring with MCB/ELCB.

### Toilets

- Good Quality toilets with marble window sill and door frame.
- Tiles dado upto 7' height.
- Concealed plumbing.
- Quality CP & Sanitary fittings of reputed make.

### Water

- Underground and overhead water tank with adequate storage capacity.

### Terrace

- Special water proofing treatment with china chips flooring.

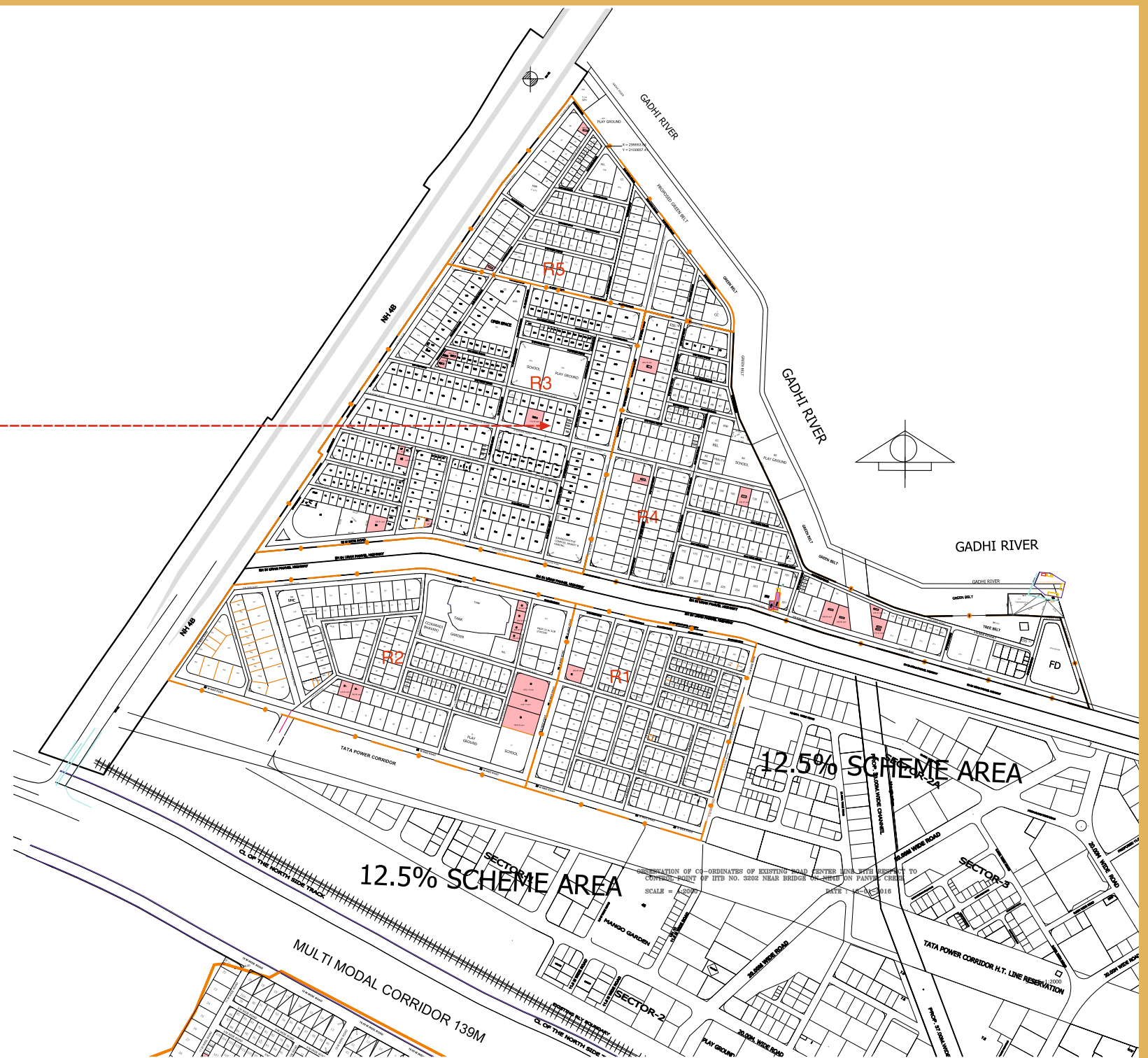
### Lift

- Adimaya elevators made lift will be provided.



Images are for representational purposes only.

DEEP DIVYA



**Plot No. 117, Sector - R3, PK1, Pushpak Node, Wadghar, Karanjade, Panvel - 410206**

Disclaimer: Elevations and drawings are subject to approval of authority. The discretion remains with the developers.

नव्या जीवनशैलीसाठी नवी सुरवात

DEEP DIVYA

Plot No. 117, Sector - R3, PK1, Pushpak Node, Wadghar, Karanjade, Panvel - 410206  
P52000020642  
[maharera.mahaonline.gov.in](http://maharera.mahaonline.gov.in)

Shop No. - 15/16, Pushpa Ganga CHS,  
Plot No - 04, Sector - 09, Kamothe, Navi Mumbai - 410 209  
022 27430709  
[office@sambhavgroup.net](mailto:office@sambhavgroup.net)  
[www.sambhavgroup.net](http://www.sambhavgroup.net)