

प्रत्येकाचे स्वप्न  
“संभव” करेल साकार



## DEEP DIVINE 2

Plot No. 64, Sector - R4, Pushpak Node, Wadghar, Karanjade, Panvel - 410216

RERA No. - P52000018778  
maharera.mahaonline.gov.in

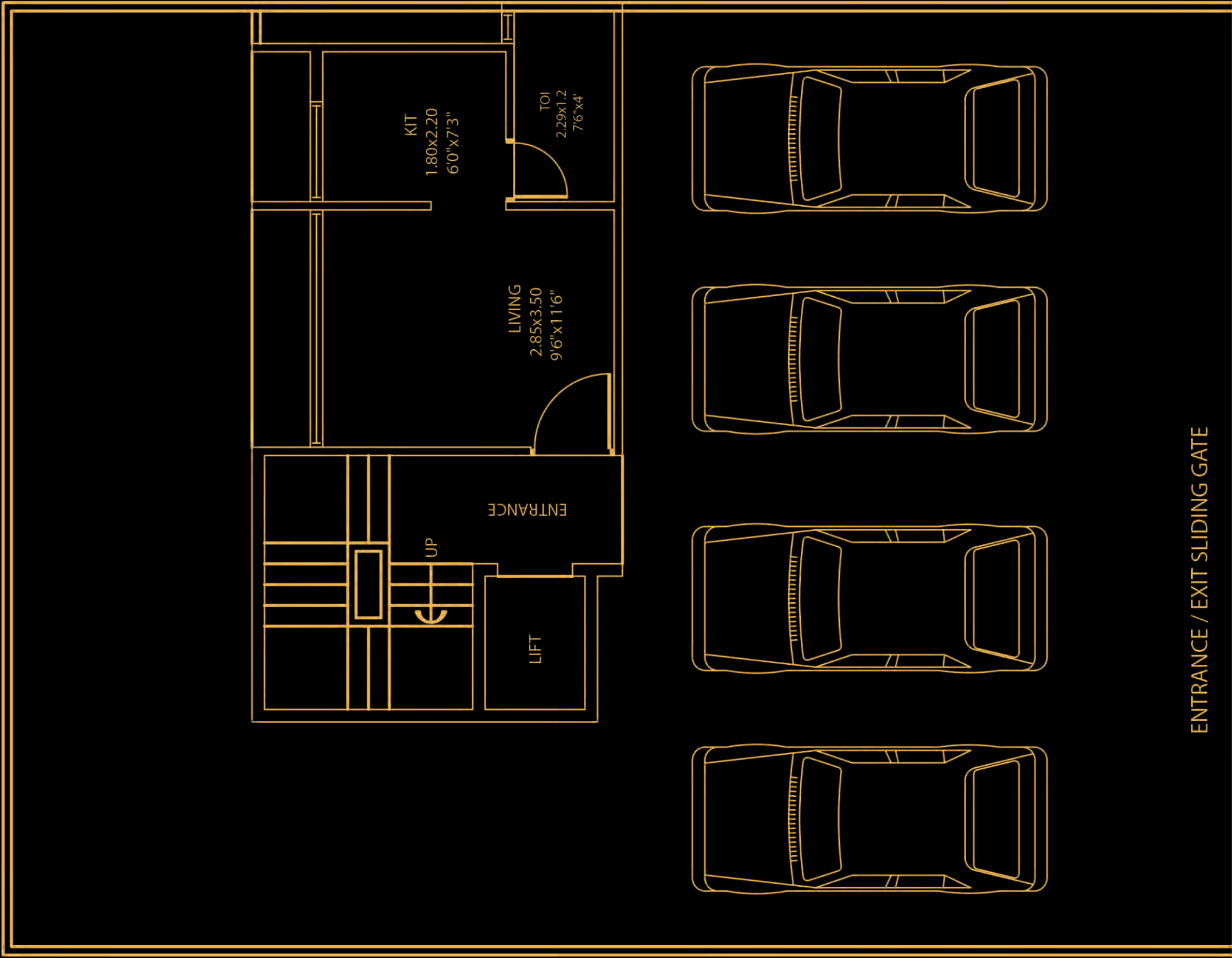


SAMBHAV GROUP™

Images are for representational purposes only.



Images are for representational purposes only.

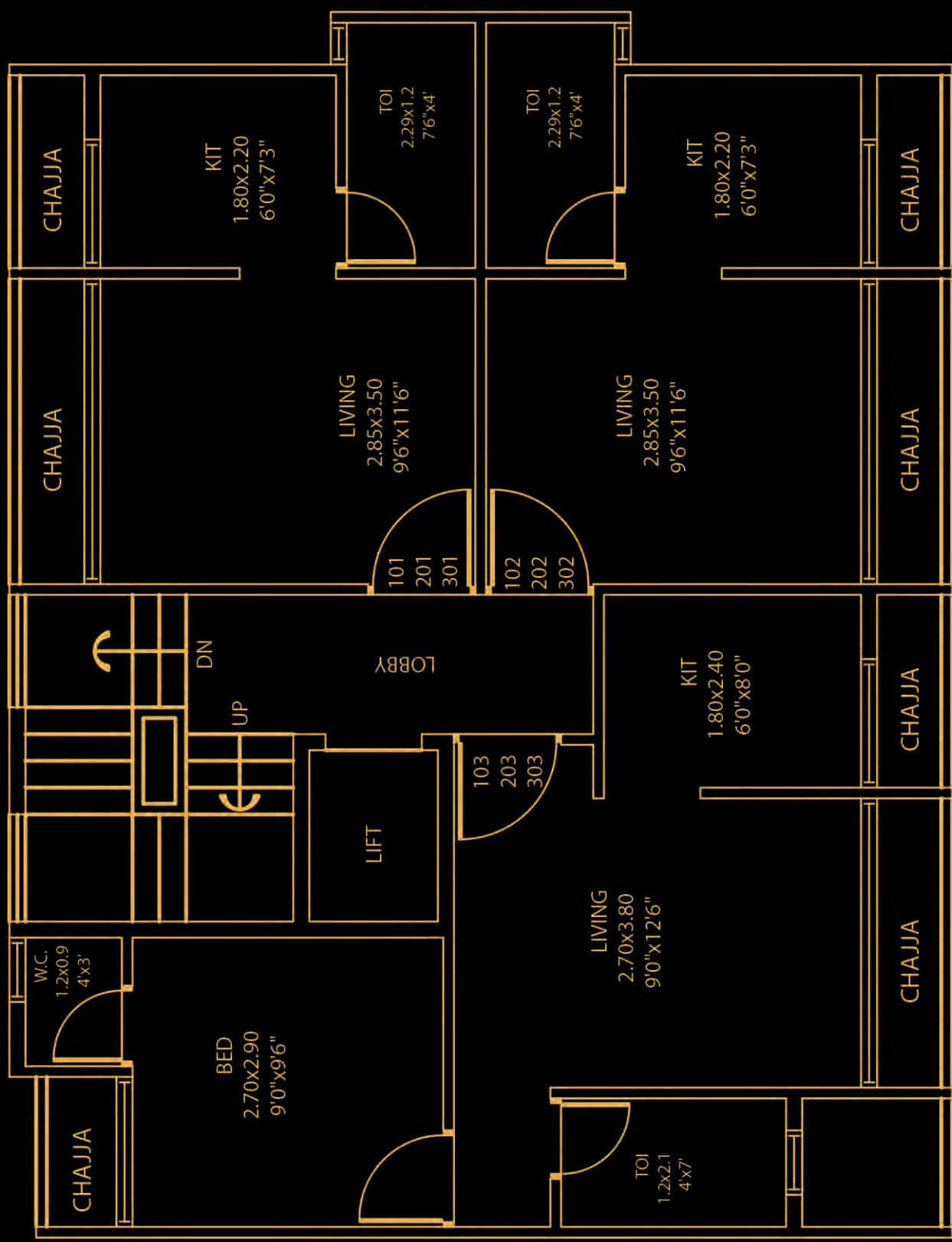


ENTRANCE / EXIT SLIDING GATE

9M WIDE ROAD

GROUND FLOOR

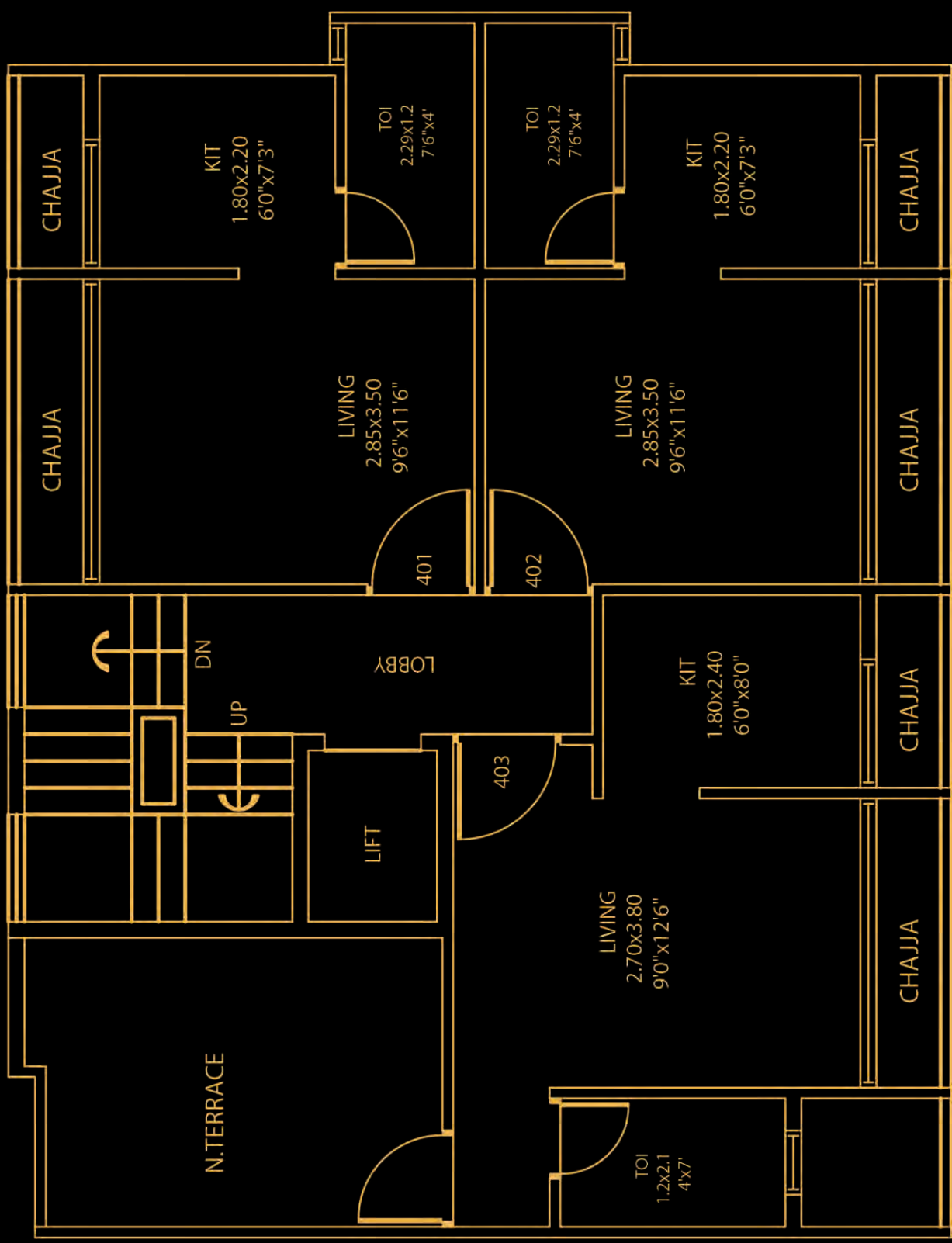
Images are for representational purposes only.



9M WIDE ROAD

1 ST, 2ND & 3RD FLOOR PLAN

Images are for representational purposes only.



9M WIDE ROAD

4TH FLOOR PLAN

## Project Features:

- CIDCO Allotted plot
- Ground +4 Storied Building with Lift
- Residential building
- 1BHK, 1RK and 1RK + Terrace
- Terrace Flat available
- Lifts of reputed make
- Car Parking space on Ground floor

## Location Features:

- Pollution free environment
- Near proposed international Airport
- 10 minutes drive from Panvel Railway Station
- 5 minutes drive from S. T. Depot
- Walking distance from Karnala Sports Academy and surrounded by schools, colleges, hospitals, restaurants etc.
- Karanjade is well connected by Roads and Railways
- ICAO (The International Civil Aviation Organization) Given Techno-feasibility clearance for The International Airport
- The Sewri-Nhava sheva sea link will connect Panvel to Mumbai city in 30 minutes
- Project behind Kalpataru Riverside and opp. to Panchmukhi Hanuman Mandir
- J.N.P.T. Port near by

## Amenities:

### Flooring

- 2' X 2' vitrified tiles flooring in entire Flat.

### Door

- Designer Main Door with elegant fittings.
- Laminate flush door for bedroom.
- Bakelite doors for all bath & W.C.

### Kitchen

- Granite Platform with stainless steel sink and ceramic tiles dado above counter upto 7' height.

### Walls/Paint

- Wall putty finished walls with acrylic distemper paint in entire flat.
- Acrylic paint on external walls.

### Windows

- Powder coated aluminum sliding window with marble sill.

### Electrification

- Sufficient electric points with ISI marked switch in all rooms.
- Provision for cable T.V/Telephone connection in living room & master bedroom.
- ISI marked concealed copper wiring with MCB/ELCB.

### Toilets

- Good Quality toilets with marble window sill and door frame.
- Tiles dado upto 7' height.
- Concealed plumbing.
- Quality CP & Sanitary fittings of reputed make.

### Water

- Underground and overhead water tank with adequate storage capacity.

### Terrace

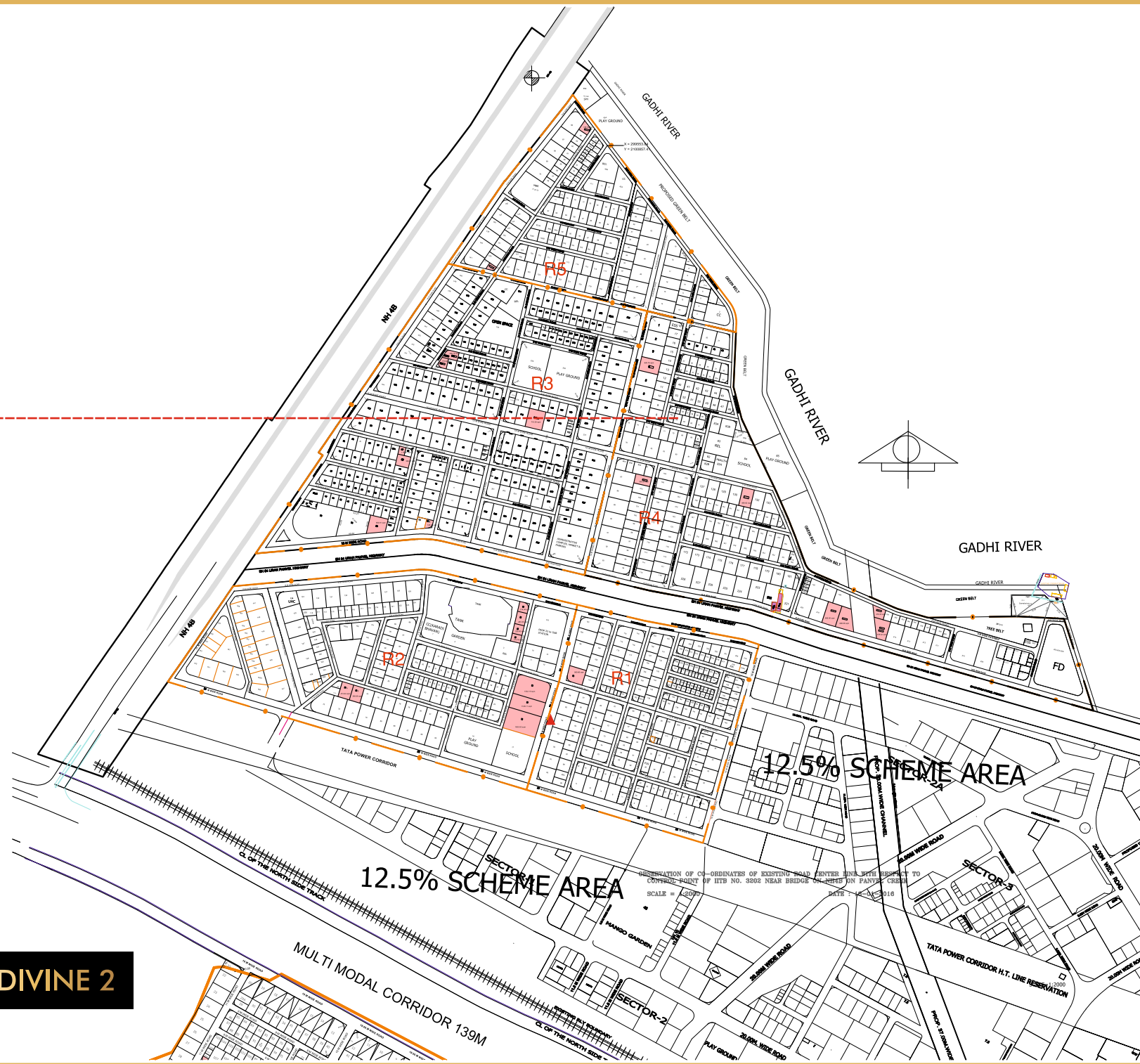
- Special water proofing treatment with china chips flooring.

### Lift

- Adimaya elevators made lift will be provided.



**DEEP DIVINE 2**



**Plot No. 64, Sector - R4, Pushpak Node, Wadghar, Karanjade, Panvel - 410216**

Disclaimer: Elevations and drawings are subject to approval of authority. The discretion remains with the developers.

नव्या जीवनशैलीसाठी नवी सुरवात

# DEEP DIVINE 2

Plot No. 64, Sector - R4, Pushpak Node, Wadghar, Karanjade, Panvel - 410216

Shop No. - 15/16, Pushpa Ganga CHS,  
Plot No - 04, Sector - 09, Kamothe, Navi Mumbai - 410 209  
Contact - 02227430709  
office@sambhavgroup.net  
www.sambhavgroup.net

RERA No. - P52000018778  
maharera.mahaonline.gov.in