

प्रत्येकाचे स्वप्न “संभव” करेल साकार





SAMBHAV GROUP™

SAI DEEP

Plot No. 36, Sector - 5A, Karanjade, Navi Mumbai





प्रत्येकाला रहायला घर हव, पण प्रत्येक कुटुंब हेच घर घडविते

Images are for representational purposes only.



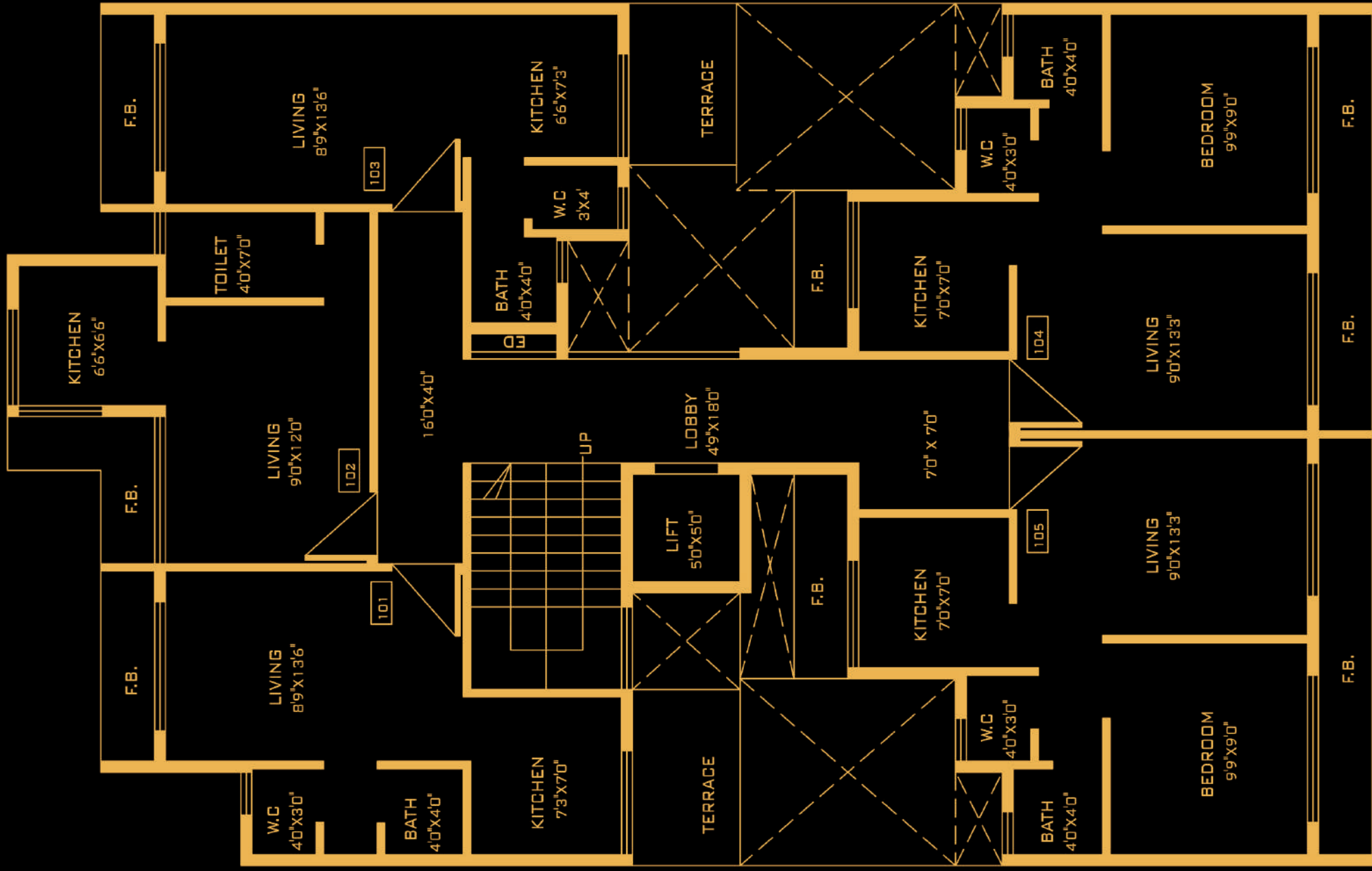
Images are for representational purposes only.



# GROUND FLOOR

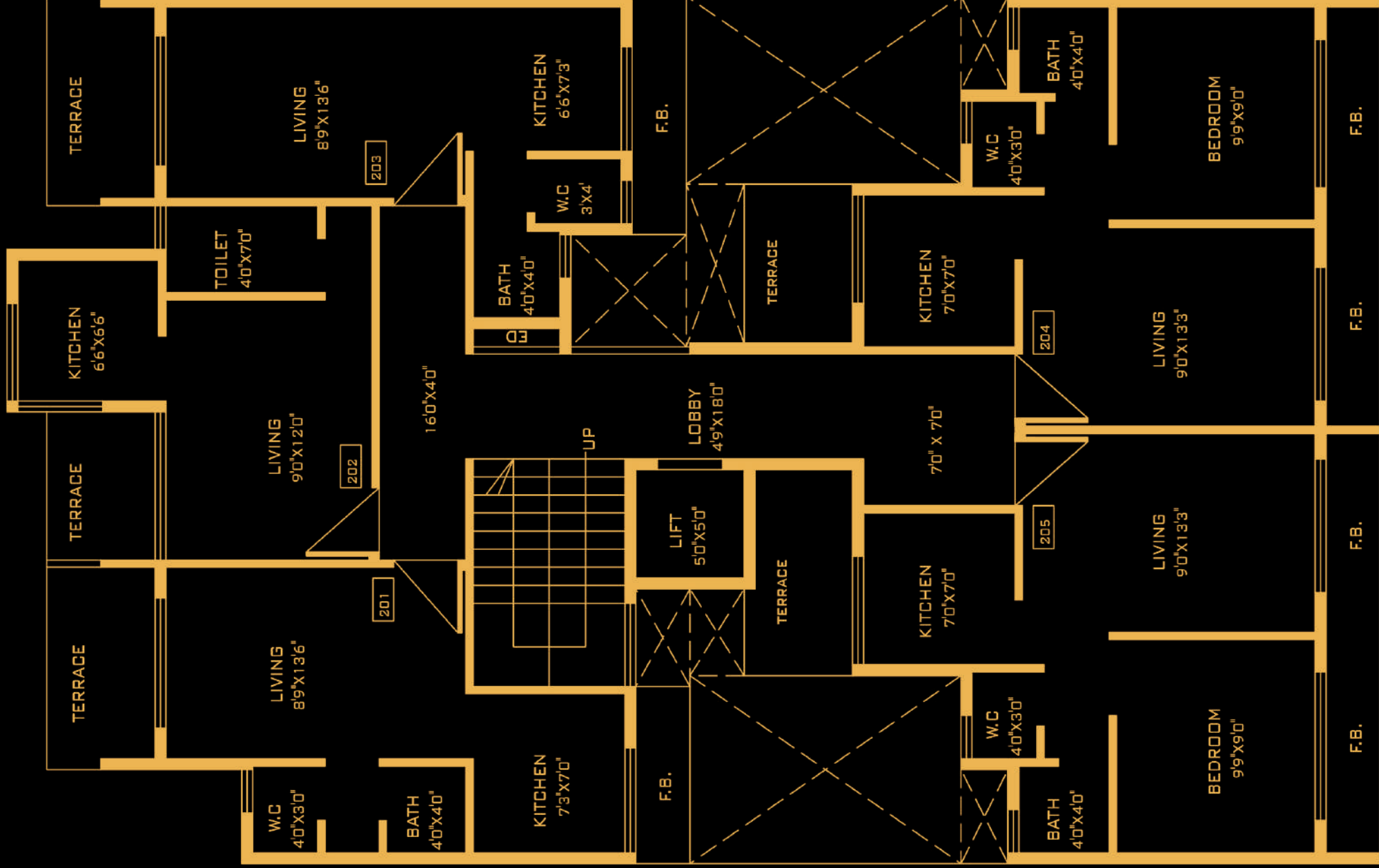


Images are for representational purposes only.



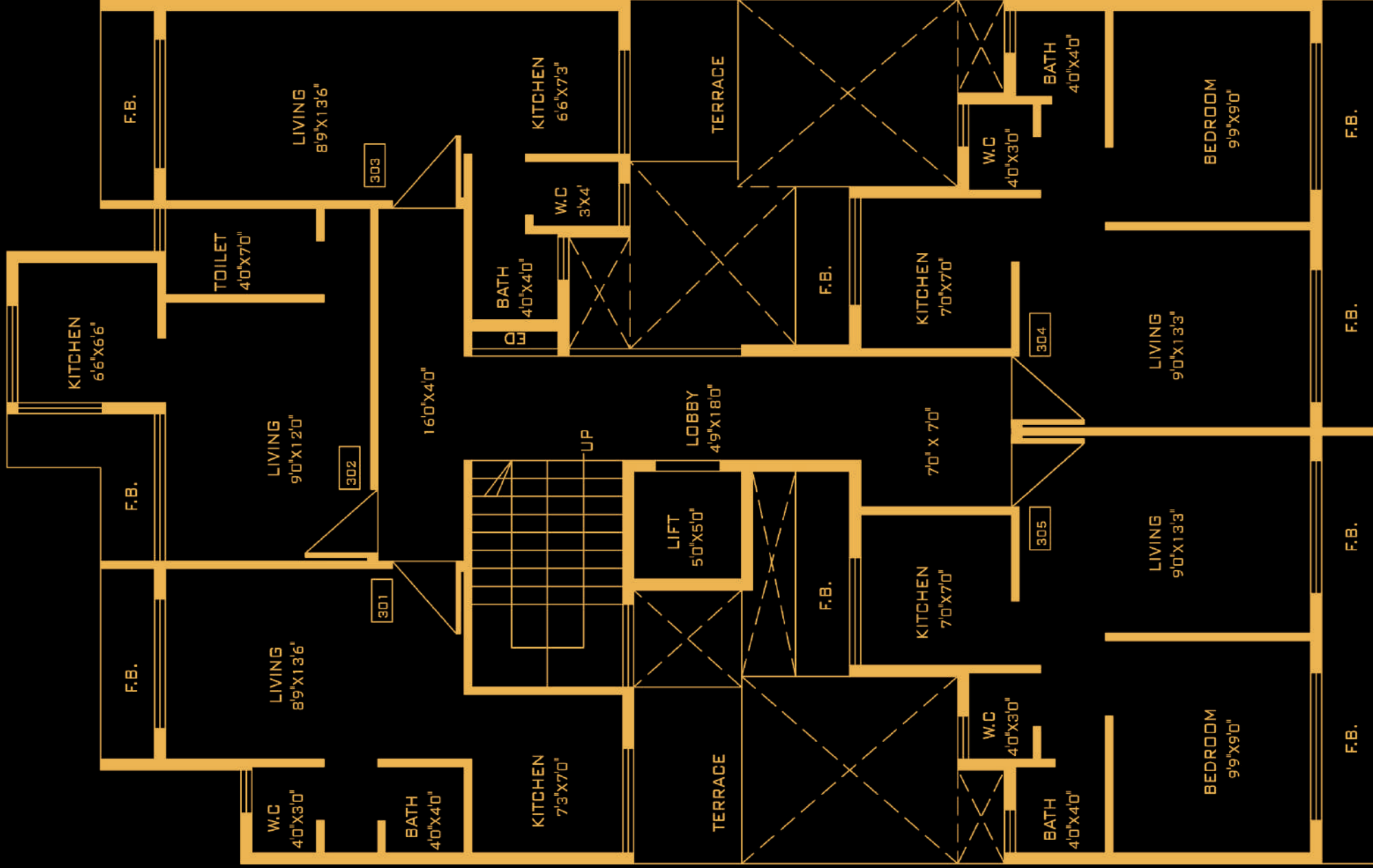
1 ST FLOOR PLAN

Images are for representational purposes only.



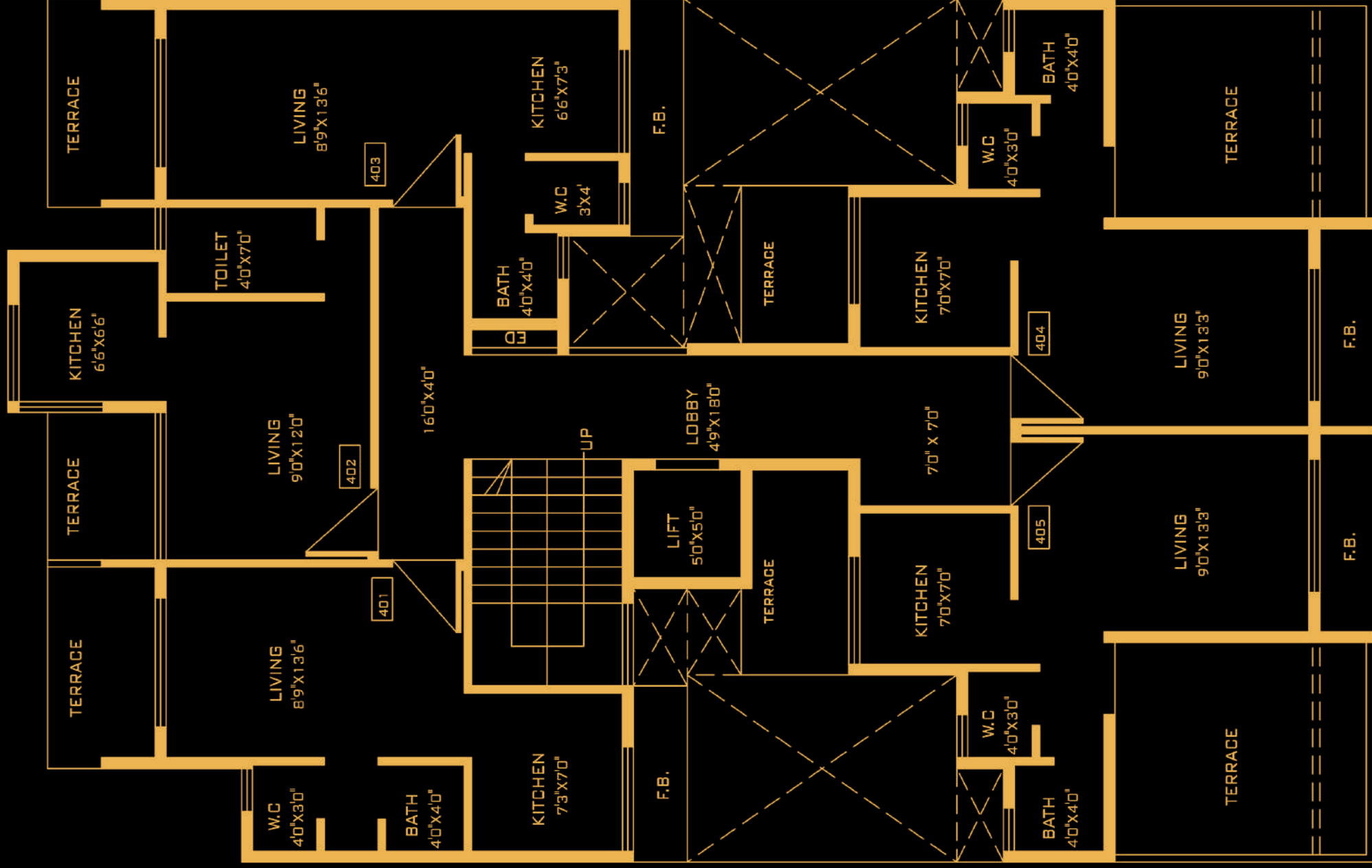
## 2ND FLOOR PLAN

Images are for representational purposes only.



### 3RD FLOOR PLAN

Images are for representational purposes only.



4TH FLOOR PLAN





Images are for representational purposes only.

## Project Features:

- Clear Title CIDCO Transfer plot
- Ground +4 Storied Building with Lift
- Residential cum commercial project
- Exclusive 1 RK, 1BHK & shops
- Terrace Flat available
- Lifts of reputed make
- Car Parking space on Ground floor

## Location Features:

- Pollution free environment
- Near proposed international Airport
- 10 minutes drive from Panvel Railway Station
- 5 minutes drive from S. T. Depot
- Walking distance from Karnala Sports Academy and surrounded by schools, colleges, hospitals, restaurants etc.
- Karanjade is well connected by Roads and Railways
- ICAO (The International Civil Aviation Organization) Given Techno-feasibility clearance for The International Airport
- The Sewri-Nhava sheva sea link will connect Panvel to Mumbai city in 30 minutes
- Project behind Kalpataru Riverside and opp. to Panchmukhi Hanuman Mandir
- J.N.P.T. Port near by

## Amenities:

### Flooring

- 2'x2' Vitrified branded type
- Flooring in all rooms

### Kitchen

- Granite kitchen platform with S. S. sink
- Glazed Tiles up to full heights

### Windows

- Powder coated sliding one way
- Glass window with Marble frame

### Colour

- Distemper paint on wall and ceiling
- 100 % acrylic paint on external and internal walls

### Water Tank

- Underground and Overhead
- Water Tank with adequate water storage capacity

### Terrace

- Special China Chips Brickbat
- Water proofing treatment with Dr. Fixit

### Bath / W. C.

- Designer tiles in toilets
- Ceramic tiles in toilet - Full height on walls
- Anti -skid ceramic tiles on flooring
- C.P. Accessories in toilets of premium brand

### Doors

- Main door & decorative
- Laminate & internal wooden doors

### Wiring

- "Polycab" concealed copper wiring with ISI made switches
- Telephone & TV point

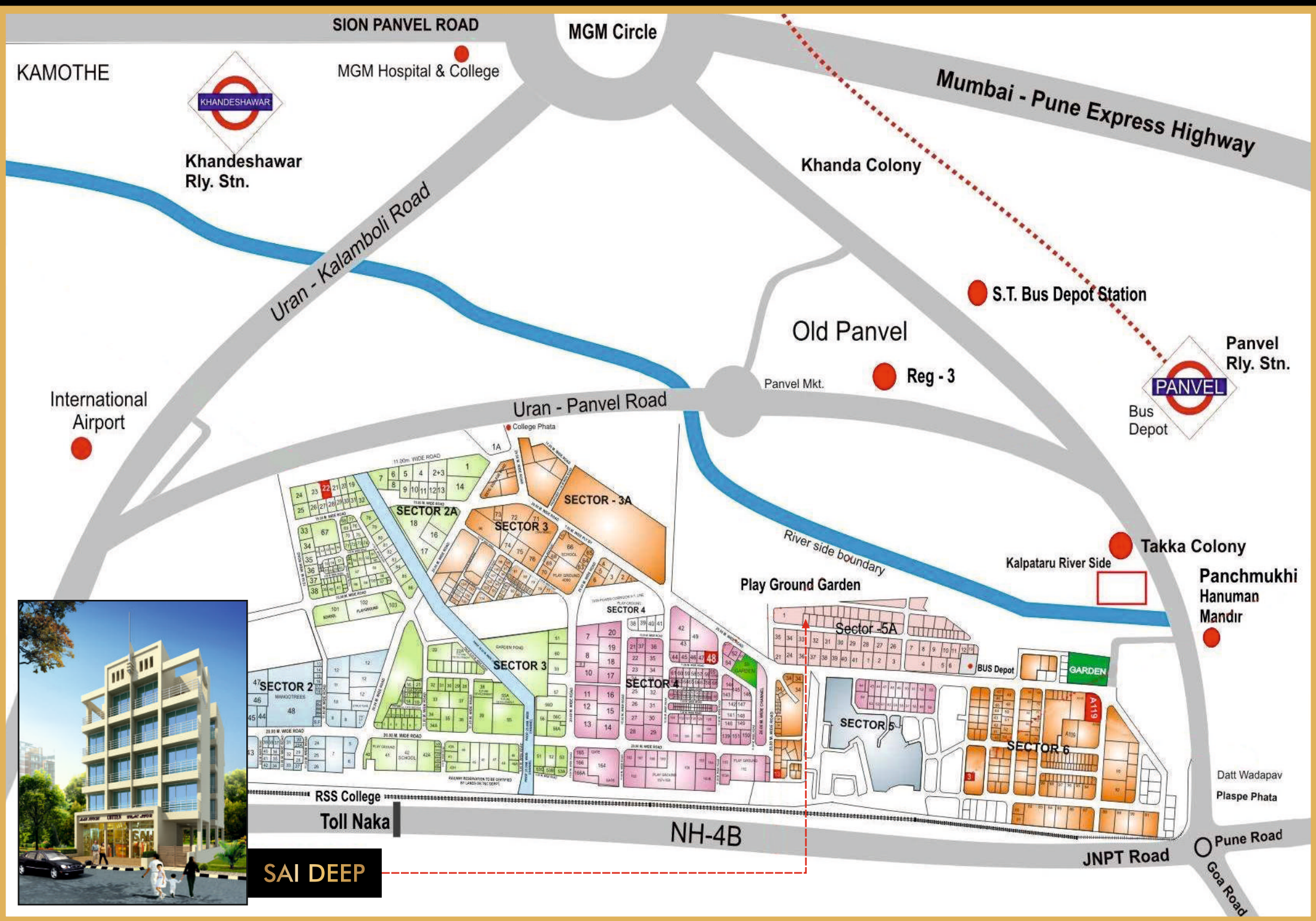
### Gate

- Decorative main gate will be provided

### Lift

- Branded lift and power backup





**Plot No. 36, Sector - 5A, Karanjade, Navi Mumbai**

Disclaimer: Elevations and drawings are subject to approval of authority. The discretion remains with the developers.



नव्या जीवनशैलीसाठी नवी सुरवात

**SAI DEEP**

Plot No. 36, Sector - 5A, Karanjade, Navi Mumbai

Shop No. - 15/16, Pushpa Ganga CHS,  
Plot No - 04, Sector - 09, Kamothe, Navi Mumbai - 410 209  
+91 22 27430709 | +91 986 999 4222 | +91 976 996 8528  
info@sambhavgroup.net | sales@sambhavgroup.net  
www.sambhavgroup.net

RERA No. - P52000004098