

प्रत्येकाचे स्वप्न
“संभव” करेल साकार

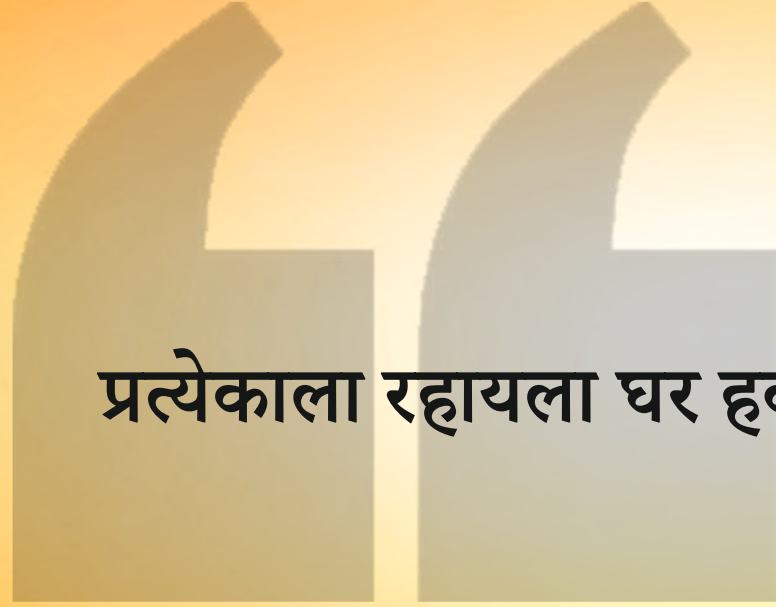


SAMBHAV GROUP™

DEEP DEVASHREE

Plot No. 299, Sector - R3, Pushpak Node, Wadghar, Karanjade, Panvel - 410216

RERA No. - P52000017595
maharera.mahaonline.gov.in



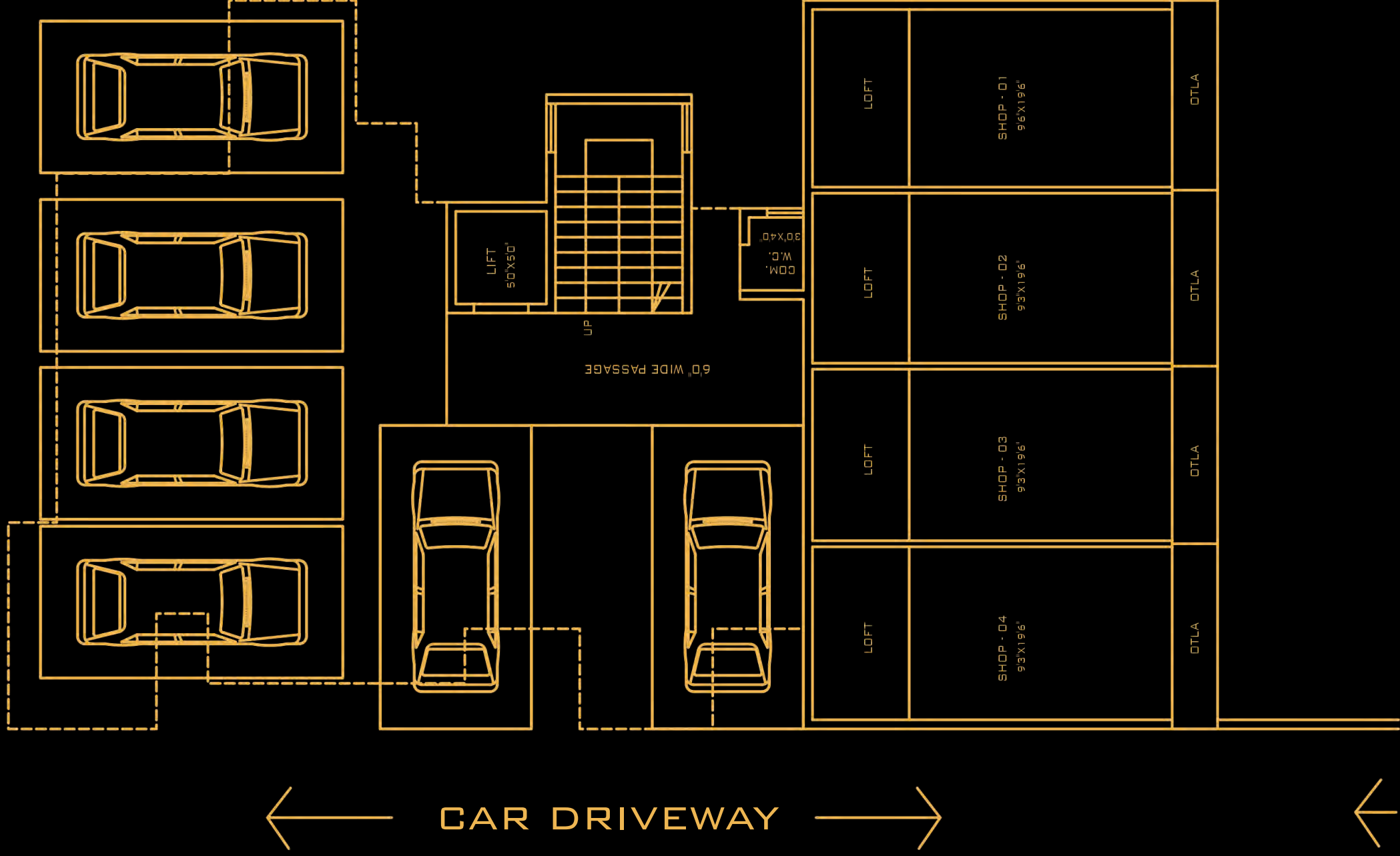
प्रत्येकाला रहायला घर हव, पण प्रत्येक कुटुंब हेच घर घडविते



Images are for representational purposes only.

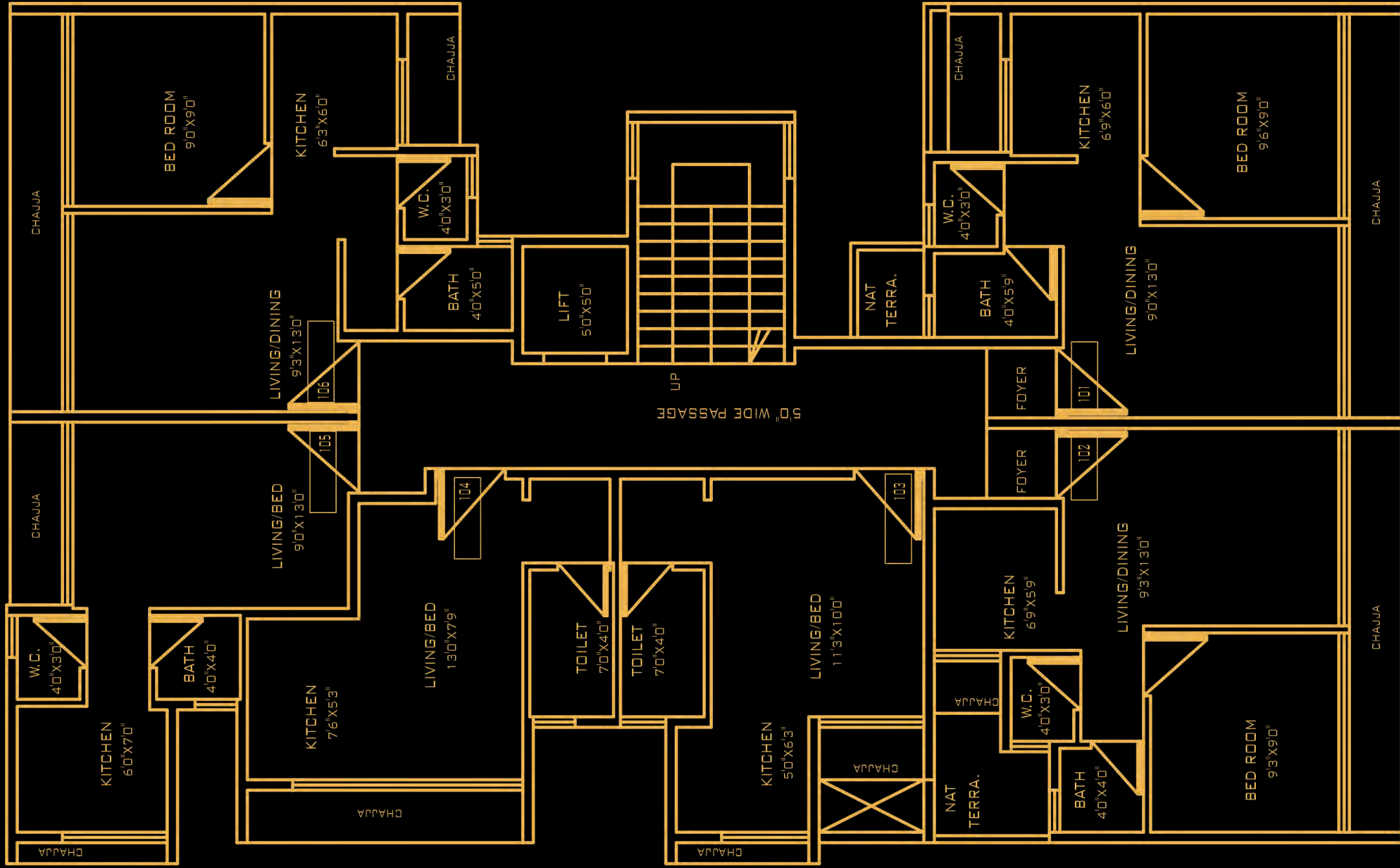


Images are for representational purposes only.



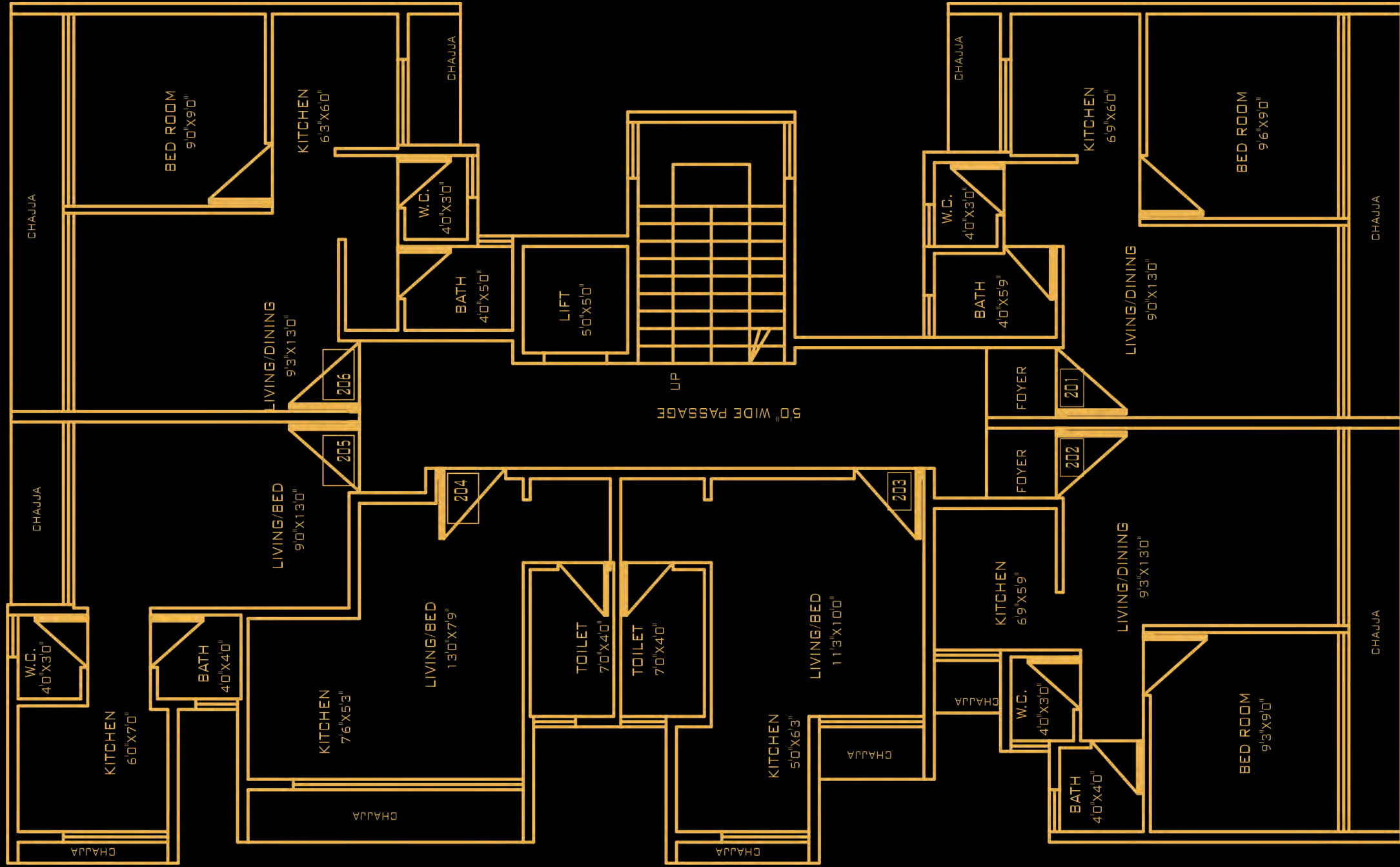
GROUND FLOOR

Images are for representational purposes only.



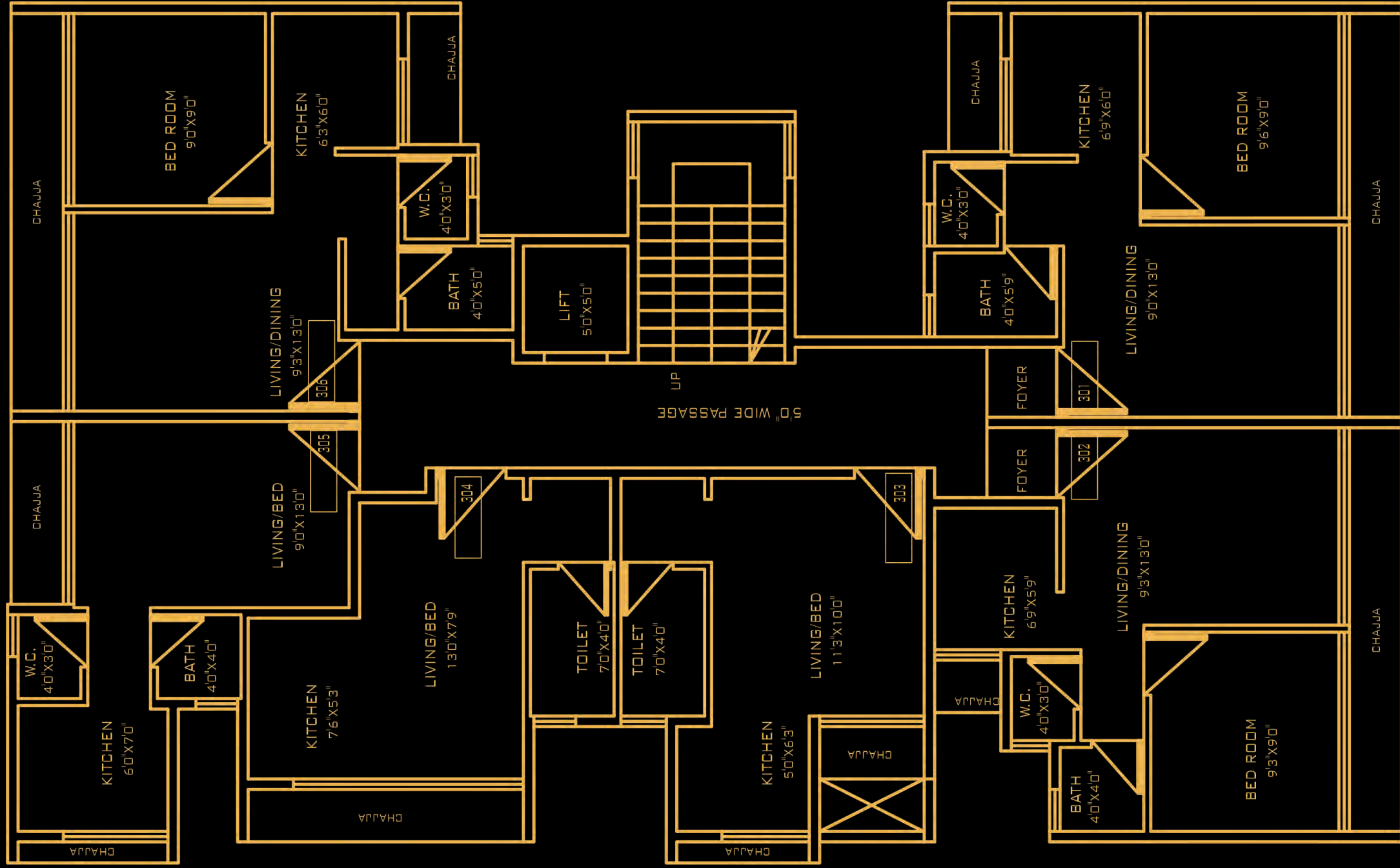
1ST FLOOR PLAN

Images are for representational purposes only.



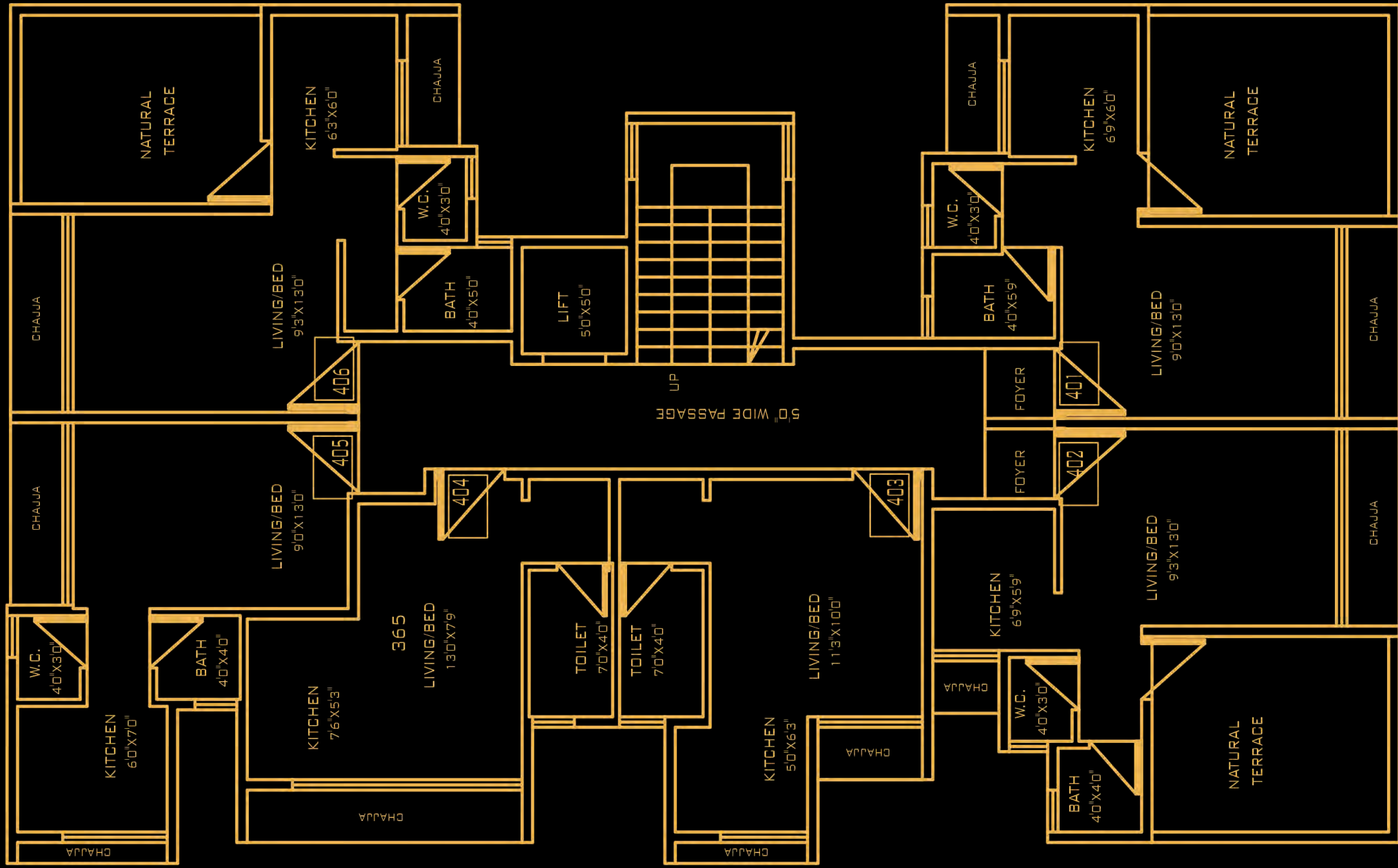
2ND FLOOR PLAN

Images are for representational purposes only.

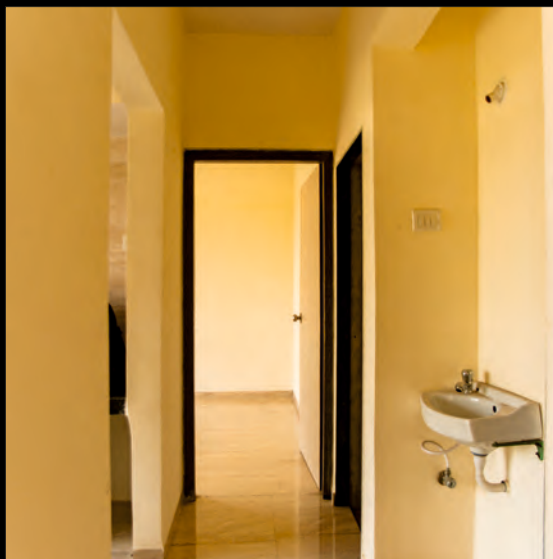
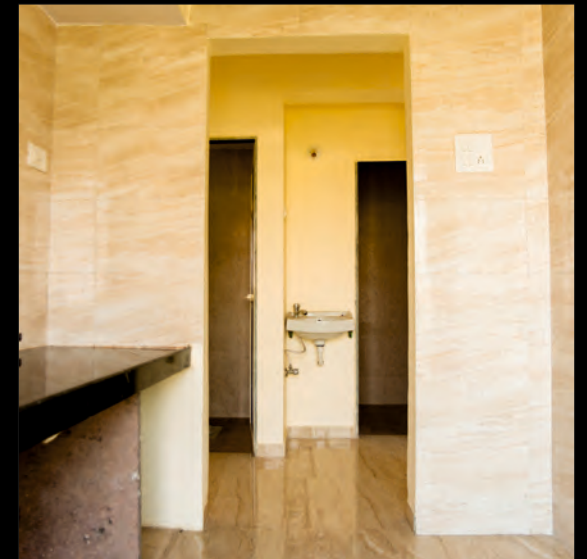


3RD FLOOR PLAN

Images are for representational purposes only.



4TH FLOOR PLAN



Images are for representational purposes only.

Project Features:

- CIDCO Allotted plot
- Ground +4 Storied Building with Lift
- Residential cum commercial building
- 1BHK, 1RK and 1RK + Terrace, Shops
- Terrace Flat available
- Lifts of reputed make
- Car Parking space on Ground floor

Location Features:

- Pollution free environment
- Near proposed international Airport
- 10 minutes drive from Panvel Railway Station
- 5 minutes drive from S. T. Depot
- Walking distance from Karnala Sports Academy and surrounded by schools, colleges, hospitals, restaurants etc.
- Karanjade is well connected by Roads and Railways
- ICAO (The International Civil Aviation Organization) Given Techno-feasibility clearance for The International Airport
- The Sewri-Nhava sheva sea link will connect Panvel to Mumbai city in 30 minutes
- Project behind Kalpataru Riverside and opp. to Panchmukhi Hanuman Mandir
- J.N.P.T. Port near by

Amenities:

Flooring

- 2' X 2' vitrified tiles flooring in entire Flat.

Door

- Designer Main Door with elegant fittings.
- Laminate flush door for bedroom.
- Bakelite doors for all bath & W.C.

Kitchen

- Granite Platform with stainless steel sink and ceramic tiles dado above counter upto 7' height.

Walls/Paint

- Wall putty finished walls with acrylic distemper paint in entire flat.
- Acrylic paint on external walls.

Windows

- Powder coated aluminum sliding window with marble sill.

Electrification

- Sufficient electric points with ISI marked switch in all rooms.
- Provision for cable T.V/Telephone connection in living room & master bedroom.
- ISI marked concealed copper wiring with MCB/ELCB.

Toilets

- Good Quality toilets with marble window sill and door frame.
- Tiles dado upto 7' height.
- Concealed plumbing.
- Quality CP & Sanitary fittings of reputed make.

Water

- Underground and overhead water tank with adequate storage capacity.

Terrace

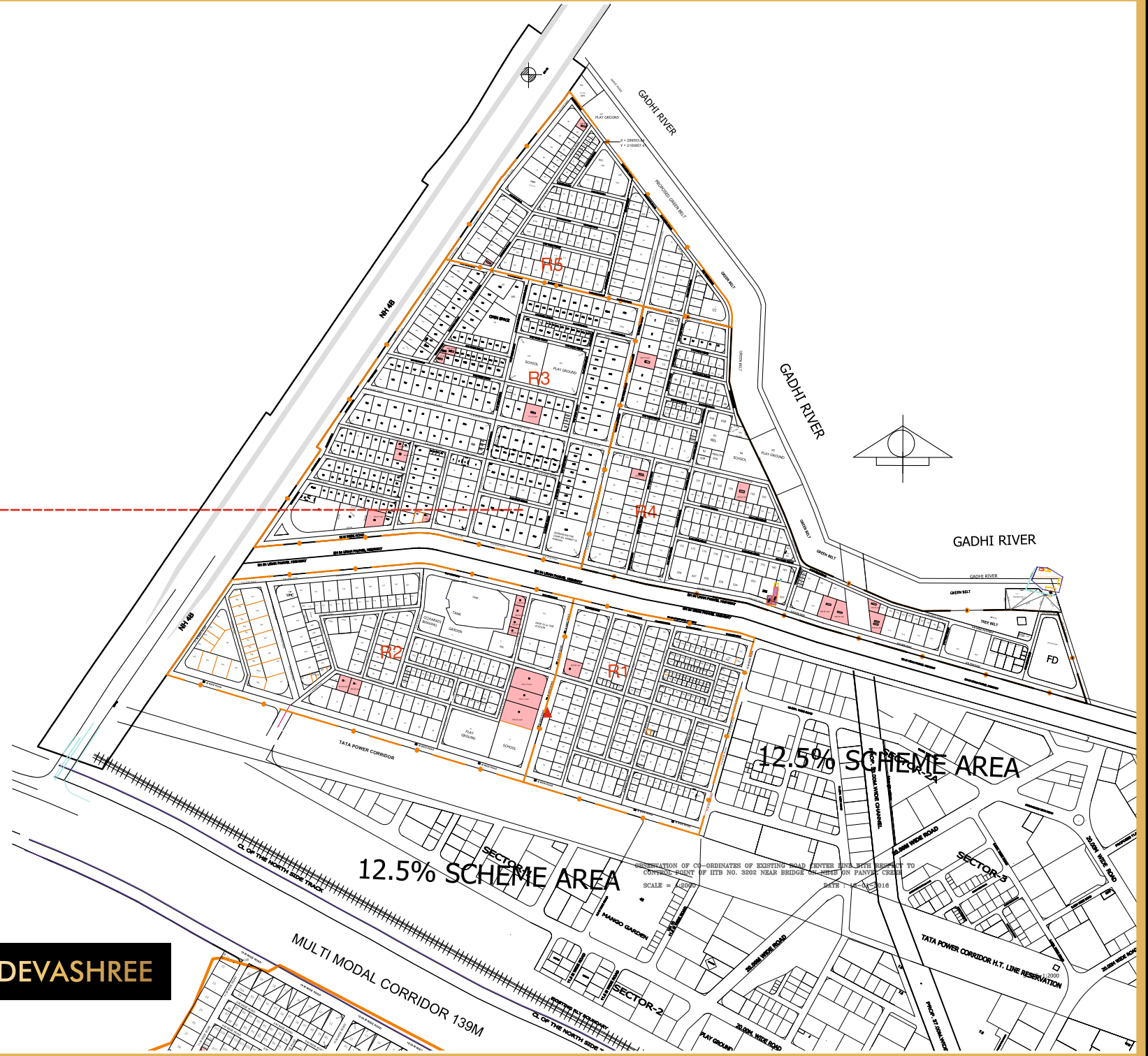
- Special water proofing treatment with china chips flooring.

Lift

- Adimaya elevators made lift will be provided.



DEEP DEVASHREE



Plot No. 299, Sector - R3, Pushpak Node, Wadghar, Karanjade, Panvel - 410216

Disclaimer: Elevations and drawings are subject to approval of authority. The discretion remains with the developers.

नव्या जीवनशैलीसाठी नवी सुरवात

DEEP DEVASHREE

Plot No. 299, Sector - R3, Pushpak Node, Wadghar, Karanjade, Panvel - 410216

Shop No. - 15/16, Pushpa Ganga CHS,
Plot No - 04, Sector - 09, Kamothe, Navi Mumbai - 410 209
+91 22 27430709 | +91 986 999 4222 | +91 976 996 8528
info@sambhavgroup.net | sales@sambhavgroup.net
www.sambhavgroup.net

RERA No. - P52000017595maharera.mahaonline.gov.in