

प्रत्येकाचे स्वप्न
“संभव” करेल साकार



SAMBHAV GROUP™

DEEP DEVANSH - 2

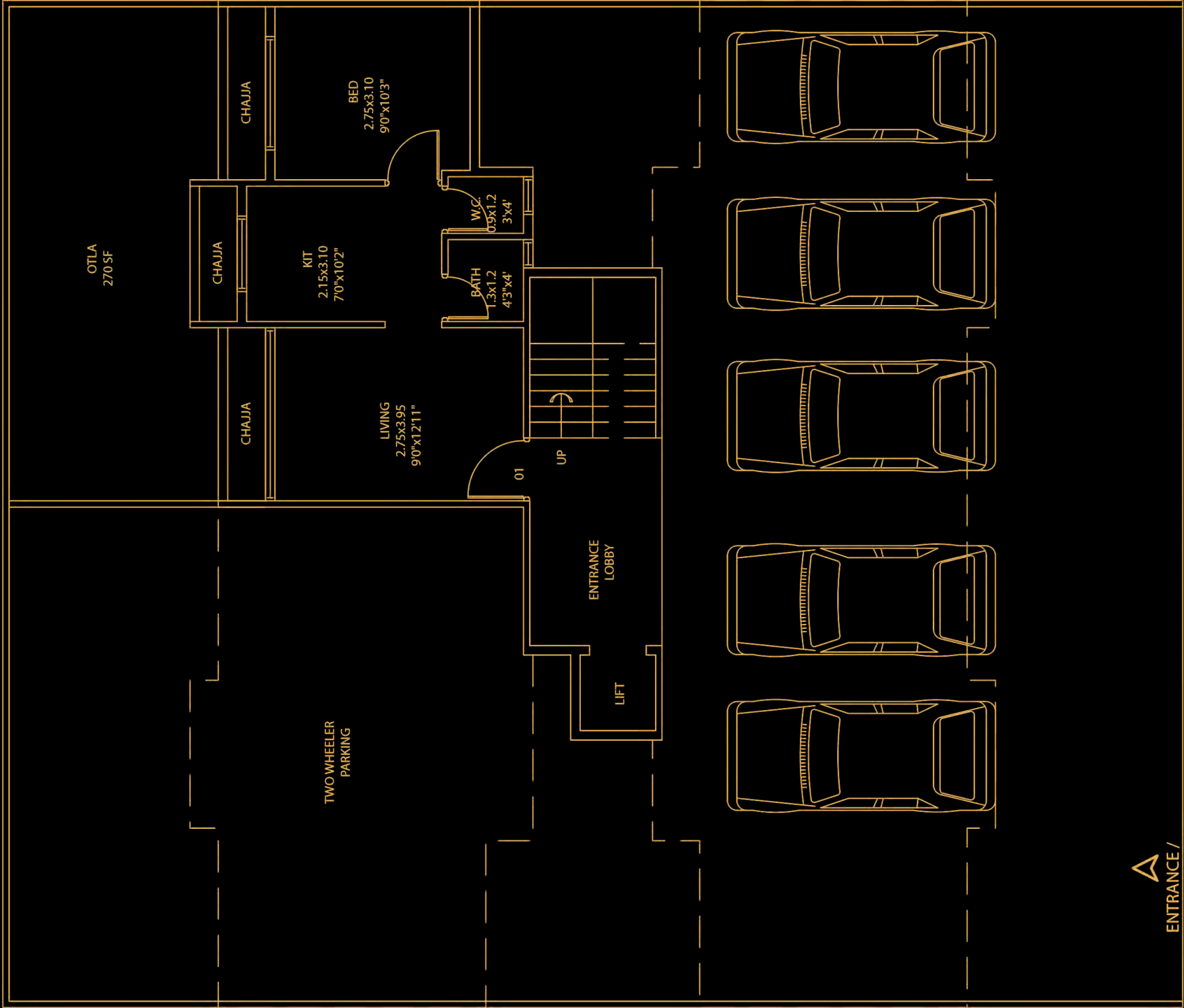
Plot No. 77, Sector - R1, Pushpak Node Wadghar, Karanjade, Panvel - 410 206

RERA No. - P52000016024
maharera.mahaonline.gov.in

Images are for representational purposes only.



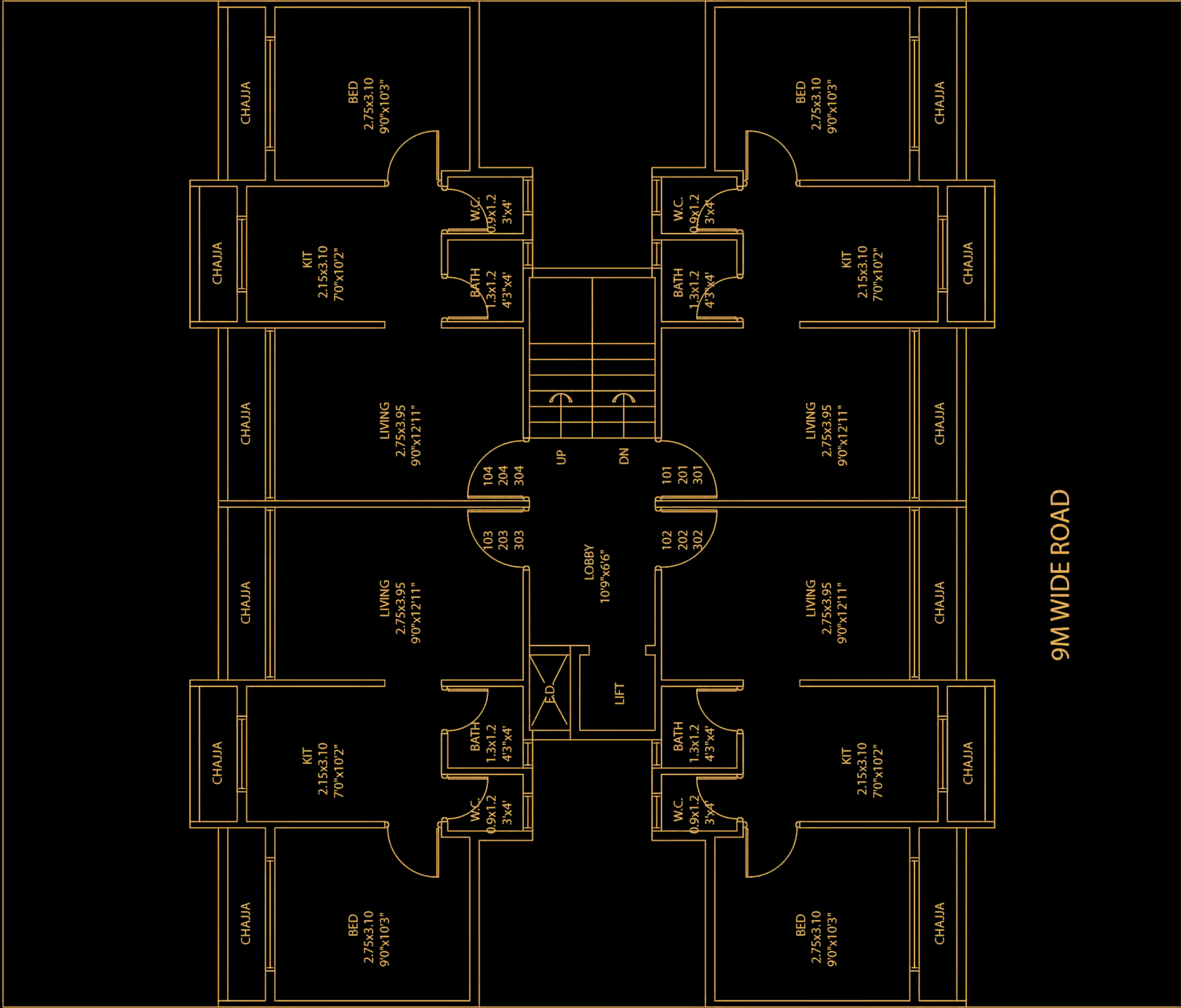
Images are for representational purposes only.

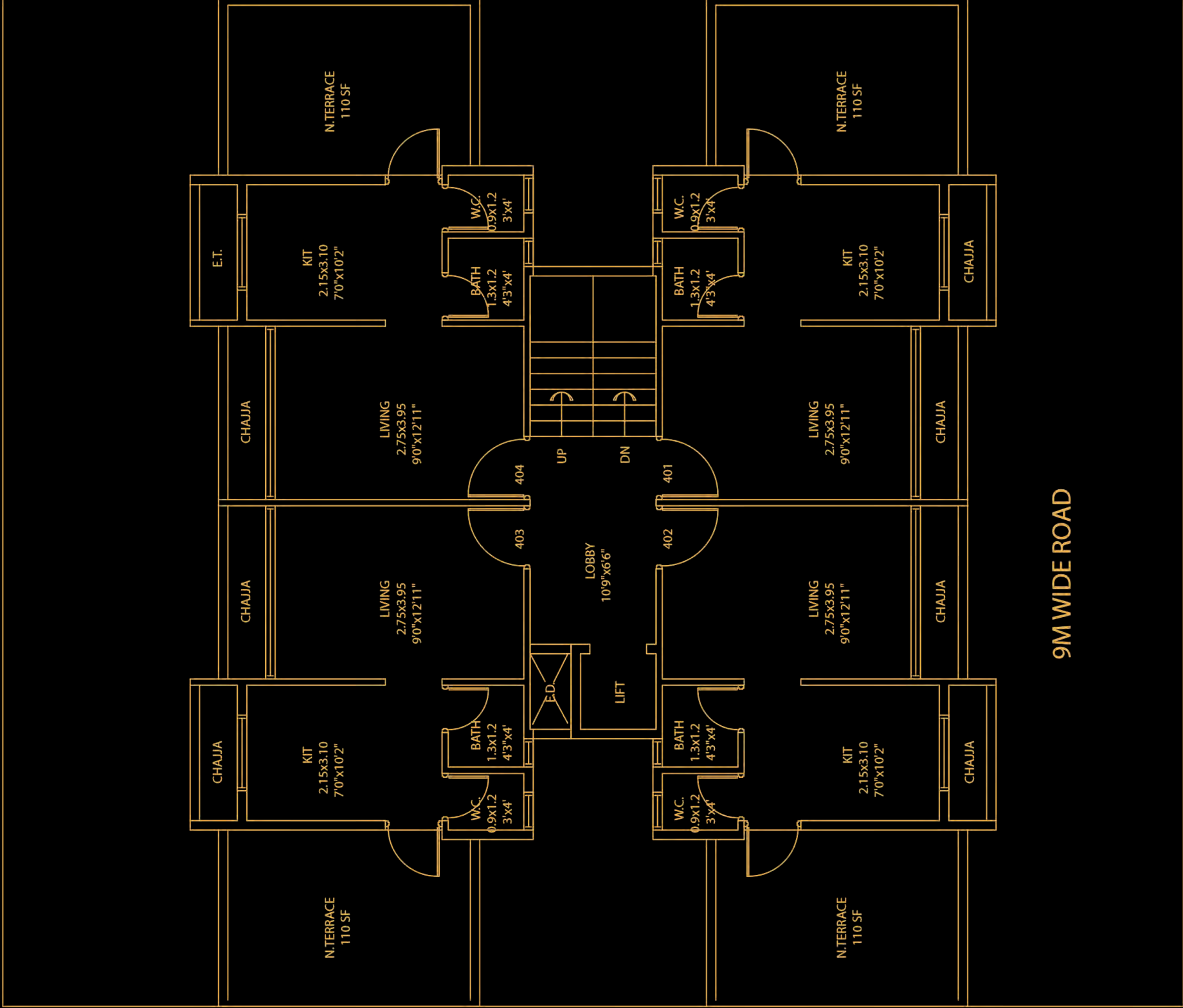


ENTRANCE /
EXIT SLIDING GATE

9M WIDE ROAD

GROUND FLOOR





Project Features:

- CIDCO Allotted plot
- Ground +4 Storied Building with Lift
- Residential building
- 1BHK and 1RK + Terrace
- Terrace Flat available
- Lifts of reputed make
- Car Parking space on Ground floor

Location Features:

- Pollution free environment
- Near proposed international Airport
- 10 minutes drive from Panvel Railway Station
- 5 minutes drive from S. T. Depot
- Walking distance from Karnala Sports Academy and surrounded by schools, colleges, hospitals, restaurants etc.
- Karanjade is well connected by Roads and Railways
- ICAO (The International Civil Aviation Organization) Given Techno-feasibility clearance for The International Airport
- The Sewri-Nhava sheva sea link will connect Panvel to Mumbai city in 30 minutes
- Project behind Kalpataru Riverside and opp. to Panchmukhi Hanuman Mandir
- J.N.P.T. Port near by

Amenities:

Flooring

- 2' X 2' vitrified tiles flooring in entire Flat.

Door

- Designer Main Door with elegant fittings.
- Laminate flush door for bedroom.
- Bakelite doors for all bath & W.C.

Kitchen

- Granite Platform with stainless steel sink and ceramic tiles dado above counter upto 7' height.

Walls/Paint

- Wall putty finished walls with acrylic distemper paint in entire flat.
- Acrylic paint on external walls.

Windows

- Powder coated aluminum sliding window with marble sill.

Electrification

- Sufficient electric points with ISI marked switch in all rooms.
- Provision for cable T.V/Telephone connection in living room & master bedroom.
- ISI marked concealed copper wiring with MCB/ELCB.

Toilets

- Good Quality toilets with marble window sill and door frame.
- Tiles dado upto 7' height.
- Concealed plumbing.
- Quality CP & Sanitary fittings of reputed make.

Water

- Underground and overhead water tank with adequate storage capacity.

Terrace

- Special water proofing treatment with china chips flooring.

Lift

- Adimaya elevators made lift will be provided.

नव्या जीवनशैलीसाठी नवी सुरवात

DEEP DEVANSH - 2

Plot No. 77, Sector - R1, Pushpak Node Wadghar, Karanjade, Panvel - 410 206

Shop No. - 15/16, Pushpa Ganga CHS,
Plot No - 04, Sector - 09, Kamothe, Navi Mumbai - 410 209
022 22 27430709 | +91 986 999 4222
info@sambhavgroup.net | office@sambhavgroup.net
www.sambhavgroup.net

RERA No. - P52000016024
maharera.mahaonline.gov.in